

HVAC

CATALOGUE 2024



ORTECH
www.ortechindustries.ca

QUALITY
MATTERS

Ortech Industries Inc. is proud to provide you the highest quality construction materials. We pride ourselves on delivering the highest quality, so you can focus on what matters most to you.

Since our inception in 2004, we have stood by our products, providing customers with the most reliable construction materials ranging from lighting, electrical and ventilation products.

Now a national supplier, ORTECH products can be found in more than 2 million homes across Canada and the USA.

TABLE OF CONTENTS

Bathroom Fans	4
Inline Fans	12
Rangehoods	20
ERV / HRV	24
Heaters	34
Accessories	36



BATHROOM FANS

BATHROOM FANS

UNIVERSAL SERIES FANS

Provides efficient air transfer with quiet operation



AC MOTOR

DESCRIPTION:

- Operates at lower RPMs for quieter operation for optimal comfort
- Plug in permanently lubricated motor engineered for continuous operation



Model	OD-9005PB		OD-1109PB		OD-1209PB		OD-1505PB	
Static Pressure in inches w.g.	0.1	0.25	0.1	0.25	0.1	0.25	0.1	0.25
Air Volume (CFM)	90	78	110	95	120	105	150	130
Noise (sones)	0.5		0.9		0.9		0.5	
Fan Watts	25W		27W		27W		43W	
Duct Diameter	6"							
Power Rating (V/Hz)	120/60							
Housing Size	10-1/2" x 11-3/8" x 7-5/8"							
Grille Dimensions	13" x 14"							
Fan Weight	10.2 lb							

PREMIUM SERIES FANS

For more efficient air transfer & operation



AC MOTOR

DESCRIPTION:

- Operates at lower RPMs for quieter operation for optimal comfort
- Includes permanent split capacitor motor that improves efficiency



Model	OD45-9005PB				OD45-1109PB			
Static Pressure in inches w.g.	0.1		0.25		0.1		0.25	
Air Volume (CFM)	90	45	67	15	110	45	100	15
Noise (sones)	0.5	0.4	N/A	N/A	1.1	0.4	N/A	N/A
Fan Watts	25W	16W	23W	14W	30W	16W	29W	14W
Duct Diameter	6"							
Power Rating (V/Hz)	120/60							
Housing Size	10-1/2" x 11-3/8" x 7-5/8"							
Grille Dimensions	13" x 14"							
Fan Weight	10.2 lb							

BATHROOM FANS

MICRO COMPACT SERIES FANS

Ultra silent with high performance

DESCRIPTION:

- Very quiet fan for ceiling or wall mounted hold
- Comes with durable high efficiency capacitor start motor



AC MOTOR

Model	ODE-5004	ODE-8007	ODE-9010
Noise (sones)	0.4	0.7	1.0
Air Volume (CFM)	50	80	90
Fir for Bath (sq.ft.)	45	75	85
Fan Watts	16W	19W	20.1W
Duct Diameter	4"		
Power Rating (V/Hz)	120/60		
Housing Size	7-1/2" x 7-1/4" x 5-5/8"		
Grille Dimensions	8-3/4" x 9-1/2"		
Warranty	1 year		

MICRO COMPACT SERIES FANS

The smallest fan in the industry

DESCRIPTION:

- Quiet fan with sleek profile
- Comes with durable high efficiency split capacitor motor



AC MOTOR

Model	ODM-5004	ODM-8010
Static Pressure in inches w.g.	0.1	0.25
Air Volume (CFM)	52.8	42.3
Noise (sones)	0.4	1.0
Fan Watts	15.8W	14.8W
Duct Diameter	4"	
Power Rating (V/Hz)	120/60	
Housing Size	7-1/2" x 7-1/4" x 5-5/8"	
Grille Dimensions	8-3/4" x 9-1/2"	
Fan Weight	6.5 lb	

BATHROOM FANS

ODD-110-18PB

The quietest fan available in the market today

DESCRIPTION:

- Dual speed operation for continuous ventilation
- Choose from 80/110/140 CFM using built-in speed selector



DC MOTOR

Model	ODD-110-18PB					
Static Pressure in inches w.g.	0.1	0.25	0.1	0.25	0.1	0.25
Air Volume (CFM)	80	80	110	110	140	140
Noise (sones)	< 0.3	N/A	< 0.3	N/A	0.3	N/A
Fan Watts	5.1W		9.8W		16.8W	
Duct Diameter	6"					
Power Rating (V/Hz)	120/60					
Housing Size	10-1/2" x 11-3/8" x 7-5/8"					
Grille Dimensions	13" x 14"					
Fan Weight	10.2 lb					

COMPACT SERIES FANS

Get the best of both worlds with this quiet and sleek fan

DESCRIPTION:

- ODD-100HS (with humidity sensor)
- ODD-100MS (with motion sensor)
- ODD-100HS+MS (humidity & motion sensors)
- ODD-100S (3 speed compact size)



DC MOTOR

Model	ODD-100HS / ODD-100HS+MS ODD-100S / ODD-100MS					
Static Pressure in inches w.g.	0.1	0.25	0.1	0.25	0.1	0.25
Air Volume (CFM)	54.5	42.8	80	62.7	100	81.2
Noise (sones)	0.1	0.9	0.4	0.8	0.7	1.0
Fan Watts	3.3W	5.7W	4.9W	7.5W	8W	9.2W
Duct Diameter	4"					
Power Rating (V/Hz)	120/60					
Housing Size	8-1/2" x 9" x 5-3/4"					
Grille Dimensions	11-13/16" x 11-7/16"					
Fan Weight	7 lb					



SUPER SLIM

ODDSS-100-3



ODDSS-100-3HS

SUPER SLIM SERIES FANS

Slimmest fan in HVAC industry, capable of wall/ceiling mounting

DESCRIPTION:

- ODDSS-100-3 (Multi-speed fan)
- ODDSS-100-3HS (Multi-speed fan with automatic humidity sensor)

FEATURES & BENEFITS:

- Sleek and slim design allows installation in tight spaces
- Optional low speed operation to meet continuous ventilation requirements
- Quiet multi-speed ECM motor with built-in delay timer or optional humidity sensor

DC MOTOR



Model	ODDSS-100-3 / ODDSS-100-3HS					
Static Pressure in inches w.g.	0.1	0.25	0.1	0.25	0.1	0.25
Air Volume (CFM)	50	50	80	80	100	100
Noise (sones)	0.6	N/A	1.0	N/A	1.2	N/A
Fan Watts	3.7W	6.5W	6.7W	10W	10.2W	14.4W
Duct Diameter	(oval) 4"					
Power Rating (V/Hz)	120/60					
Housing Size	10-1/4" x 10-1/4" x 3-3/8"					
Grille Dimensions	13-3/4" x 13"					
Fan Weight	6.5 lb					

ODD-300

This powerful fan offers quiet air transfer with a sleek profile

DESCRIPTION:

- Operates at lower RPMs for quieter operation
- Grille is made of rugged polymeric resin known for long life durability



DC MOTOR

Model	ODD-300	
Static Pressure in inches w.g.	0.1	0.25
Air Volume (CFM)	290	268
Noise (sones)	3.8	4.0
Fan Watts	52W	
Duct Diameter	6"	
Power Rating (V/Hz)	120/60	
Housing Size	11-3/8" x 10-1/2" x 7-5/8"	
Grille Dimensions	13" x 14"	
Fan Weight	12.5 lb	

ODD-70-1 | ODD-90-1 | ODD-110-1

Next Generation Single Speed DC Motor Compact Series

DESCRIPTION:

- Very quiet fan for ceiling or wall mounted hold
- Comes with durable high efficiency split capacitor motor
- Housing made of rugged 26 GA galvanized steel



DC MOTOR

Model	ODD-70-1	ODD-90-1	ODD-110-1
Noise (sones)	0.3	0.8	1.0
Air Volume (CFM)	70	90	110
Fir for Bath (sq.ft.)	45	75	95
Fan Watts	3.5W	5.5W	8W
Duct Diameter	4"		
Power Rating (V/Hz)	120/60		
Housing Size	9" x 9" x 5-3/4"		
Grille Dimensions	11-7/8" x 11-3/8"		
Blower Wheel	Centrifugal		

SUPREME SERIES FANS

Our most powerful fans have the smallest footprint in the market

DESCRIPTION:

- Equipped with metal blower
- Operates at lower RPMs for quieter operation
- Grille is made of rugged polymeric resin known for long life durability



DC MOTOR

Model	ODD-400		ODD-500	
Static Pressure in inches w.g.	0.1	0.25	0.1	0.25
Air Volume (CFM)	400	390	500	480
Noise (sones)	3.2	3.0	4.0	
Fan Watts	40W		59W	
Duct Diameter	8"			
Power Rating (V/Hz)	120/60			
Housing Size	14-1/4" x 14-1/4" x 9"			
Grille Dimensions	17-1/4" x 17-3/4"			
Fan Weight	21.8 lb			

ODD-500-4

Our most powerful & sleek fan is now wall controllable

DESCRIPTION:

- Energy efficient DC motor
- Operates at lower RPMs for quieter operation
- Optional outside wall mounting controller for CFM adjustment
- Low speed adjustable speed controller (optional) allows accurate CFM selection (120 CFM ~ Max CFM)



DC MOTOR

Model	ODD-500-4							
Static Pressure in inches w.g.	0.1	0.25	0.1	0.25	0.1	0.25	0.1	0.25
Air Volume (CFM)	202	153	302	251	401	336	504	445
Noise (sones)	0.4	1.4	1.4	1.9	2.8	2.9	4.6	5.7
Fan Watts	12W	18W	22W	27W	38W	41W	66W	70W
Duct Diameter	8"							
Power Rating (V/Hz)	120/60							
Housing Size	14-1/4" x 14-1/4" x 9"							
Grille Dimensions	17-1/4" x 17-3/4"							
Fan Weight	21.8 lb							

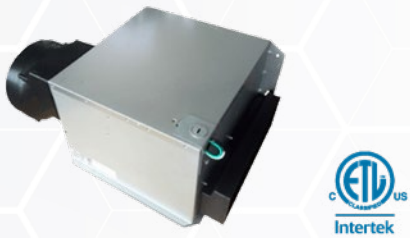


INLINE FANS

INLINE FANS

ODDIN-110

Dual speed capable, multispeed inline fan

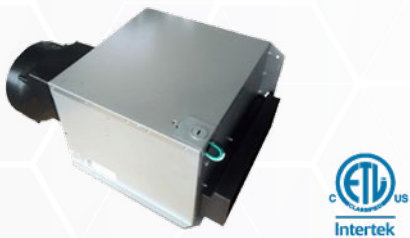


- DESCRIPTION:**
- Adjustable variable speed from 30 CFM to 140 CFM
 - The fan capacity can be adjusted using built-in dip switches
 - When turned off, has a built-in time delay that can be set between 3-30 minutes
 - Adjustable variable speed allows the fan to run for an extra few minutes to ensure all the stale air has been removed

Model	ODDIN-110							
Static Pressure in inches w.g.	0.1	0.25	0.1	0.25	0.1	0.25	0.1	0.25
Air Volume (CFM)	90	73	110	100	120	110	140	125
Noise (sones)	0.5	N/A	0.9	N/A	1.2	N/A	1.6	N/A
Fan Watts	8.1W		10.3W		12.2W		15.6W	
Duct Diameter	6"							
Power Rating (V/Hz)	120/60							
Housing Size	11-5/16" x 10-1/2" x 7-3/4"							
Fan Weight	10.5 lb							

UNIVERSAL SERIES INLINE FANS

Efficient and quiet inline air transfer



- DESCRIPTION:**
- Motor thermally protected
 - 80/90/110/120/150 CFM inline fans
 - Comes with attachable 6" polymeric collar

Model	ODSIN-80		ODSIN-90		ODSIN-110		ODSIN-120		ODSIN-150	
Static Pressure in inches w.g.	0.1	0.25	0.1	0.25	0.1	0.25	0.1	0.25	0.1	0.25
Air Volume (CFM)	80	68	90	78	110	95	120	105	150	130
Noise (sones)	0.3	0.7	0.3	0.7	0.9	1.2	0.9	1.2	1.1	1.5
Fan Watts	< 26W		< 26W		< 30W		< 30W		< 40W	
Duct Diameter	6"									
Power Rating (V/Hz)	120/60									
Housing Size	10-1/2" x 11-5/16" x 7-3/4"									
Fan Weight	10.2 lb									



OIF4-140
4" duct

OIF5-190
5" duct

OIF6-260
6" duct

OIF8-560
8" duct

OIF10-670
10" duct

OIF12-880
12" duct

OIF SERIES INLINE FANS

Commercial grade speed controllable inline fans



DESCRIPTION:

- Operating temperature is from -10°C to +80°C
- Complies with CSA C22.2 No.113 standard clause 12 for Dryer Exhaust Duct Power Ventilators

Model	Current (Amp)	Power (Watt)	RPM (Nominal)	Noise (Sone)	Electrical Rating	Room Size Capacity
OIF4-140	0.80	92	2450	2.1	120V /60Hz	100-150 ft²
OIF5-190	0.86	102	2420	2.6	120V /60Hz	150-200 ft²
OIF6-260	0.88	105	2620	2.8	120V /60Hz	200-280 ft²
OIF8-560	2.03	235	2530	3.7	120V /60Hz	400-580 ft²
OIF10-670	1.88	220	2660	4.4	120V /60Hz	580-680 ft²
OIF12-880	1.80	210	2730	5	120V /60Hz	680-780 ft²

Model	Static Pressure (SP)								
	0 SP	0.1 SP	0.2 SP	0.25 SP	0.3 SP	0.4 SP	0.5 SP	0.6 SP	0.7 SP
OIF4-140	152 CFM	147 CFM	144 CFM	135 CFM	132 CFM	123 CFM	120 CFM	111 CFM	108 CFM
OIF5-190	214 CFM	200 CFM	188 CFM	182 CFM	176 CFM	164 CFM	155 CFM	141 CFM	129 CFM
OIF6-260	282 CFM	276 CFM	264 CFM	255 CFM	250 CFM	232 CFM	208 CFM	182 CFM	161 CFM
OIF8-560	605 CFM	588 CFM	582 CFM	558 CFM	500 CFM	494 CFM	452 CFM	423 CFM	382 CFM
OIF10-670	647 CFM	629 CFM	570 CFM	538 CFM	520 CFM	482 CFM	470 CFM	450 CFM	429 CFM
OIF12-880	911 CFM	882 CFM	870 CFM	832 CFM	794 CFM	735 CFM	676 CFM	641 CFM	594 CFM

Model	Static Pressure (SP)								
	0.8 SP	0.9 SP	1.0 SP	1.2 SP	1.4 SP	1.5 SP	1.6 SP	2.0 SP	2.5 SP
OIF4-140	100 CFM	94 CFM	88 CFM	73 CFM	70 CFM	43 CFM	26 CFM	/	/
OIF5-190	120 CFM	105 CFM	100 CFM	79 CFM	61 CFM	47 CFM	32 CFM	/	/
OIF6-260	150 CFM	141 CFM	132 CFM	108 CFM	79 CFM	58 CFM	35 CFM	/	/
OIF8-560	352 CFM	329 CFM	294 CFM	263 CFM	238 CFM	217 CFM	200 CFM	141 CFM	47 CFM
OIF10-670	411 CFM	388 CFM	352 CFM	545 CFM	480 CFM	252 CFM	241 CFM	176 CFM	94 CFM
OIF12-880	547 CFM	488 CFM	417 CFM	615 CFM	520 CFM	282 CFM	261 CFM	176 CFM	47 CFM

MIXED FLOW INLINE FANS

Mixed flow inline fans for a variety of applications



DESCRIPTION:

- Equipped with cutting edge brushless EC motor
- Low power consumption for efficient operation

Model	ODDMF-4-160	ODDMF-6-350	ODDMF-8-710	ODDMF-10-1065	ODDMF-12-1750
Fan Size	4"	6"	8"	10"	12"
Max. Speed	5000 RPM	5000 RPM	3800 RPM	3200 RPM	2800 RPM
Max. Airflow	160 CFM	350 CFM	710 CFM	1065 CFM	1640 CFM
Max. Static Pressure	1 in .w.g.	2 in .w.g.	2 in .w.g.	2 in .w.g.	2 in .w.g.
Max. Noise Level	7 sones	9 sones	10 sones	13 sones	19 sones
Max. Power	18W /50-60Hz	40W /50-60Hz	75W /50-60Hz	150W /50-60Hz	260W /50-60Hz
Motor Type	EC Motor	EC Motor	EC Motor	EC Motor	EC Motor
Impeller Design	Mixed Flow	Mixed Flow	Mixed Flow	Mixed Flow	Mixed Flow
IP Rating	IP 64 (IP 68 available on custom order)	IP 64 (IP 68 available on custom order)	IP 64 (IP 68 available on custom order)	IP 64 (IP 68 available on custom order)	IP 64 (IP 68 available on custom order)
Fan Weight	2.4 lb	3.5 lb	5.5 lb	6.6 lb	18.7 lb

ODDMF SPEED CONTROLLER
(CONTROLLER INCLUDED IN BOX)

DESCRIPTION:

- Included with ODDMF inline fans
- Simple and portable speed controller
- 0-100% variable speed control by potentiometer

3.5mm connection jack





INLINE FANS

MIXED FLOW SILENCERS

Silenced, mixed flow inline fans for a variety of applications



DESCRIPTION:

- Equipped with cutting edge brushless EC motor
- Offers lower noise level than mixed flow inline fans

Model	ODDMF-6-350-Q	ODDMF-8-710-Q	ODDMF-10-1065-Q	ODDMF-12-1750-Q
Fan Size	6"	8"	10"	12"
Max. Speed	5000 RPM	3800 RPM	3200 RPM	2800 RPM
Max. Airflow	350 CFM	710 CFM	1065 CFM	1640 CFM
Max. Static Pressure	2 in .w.g.	2 in .w.g.	2 in .w.g.	2 in .w.g.
Max. Noise Level	5 sones	5 sones	7 sones	9 sones
Max. Power	40W /50-60Hz	75W /50-60Hz	150W /50-60Hz	260W /50-60Hz
Motor Type	EC Motor	EC Motor	EC Motor	EC Motor
Impeller Design	Mixed Flow	Mixed Flow	Mixed Flow	Mixed Flow
IP Rating	IP 64*	IP 64*	IP 64*	IP 64*
Fan Weight	11 lb	16.5 lb	30.2 lb	46.3 lb

* IP 68 available on custom order

ODDMF WALL MOUNTED CONTROLLER
(CONTROLLER INCLUDED IN BOX)

DESCRIPTION:

- Fits into standard gang plate
- To be used with ODDMF fans
- Provides 0-100% variable speed control range





INLINE FANS

DRYER BOOSTER FANS

5" intake dryer booster fan for ceiling/wall mounting


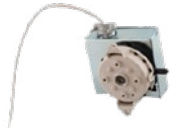


DESCRIPTION:

- Performs well under any extreme restrictive duct design
- Hinged access door with integrated mounted motor to simplify period servicing

Model	0.1"	0.2"	0.3"	0.4"	0.5"	0.6"	0.7"	0.8"	0.9"	1.0"
SDF200	206	203	196	190	183	176	168	160	153	144

Model	SDF-200
Amps (FLA)	0.9
Fan Speed (RPM)	2600
Sone	2.5
Intake	5"
Discharge	5"
Dimensions	10-1/2" x 11" x 6"
Fan Weight	12 lb

Add ons (Optional)	
	Amp Sensors AS-0 AS-5
	Air Pressure Sensing Switch SDS-10



DUAL INTAKE DRYER BOOSTER FANS


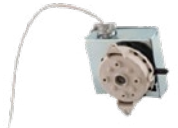
4" dual intake dryer booster fan for ceiling/wall mounting

DESCRIPTION:

- Double inlet collars for dual exhaust
- Performs well under any extreme restrictive duct design

Model	0.1"	0.2"	0.3"	0.4"	0.5"	0.6"	0.7"	0.8"	0.9"	1.0"
SDF200-2	235	222	211	205	195	186	175	169	158	150

Model	SDF200-2
Amps (FLA)	0.9
Fan Speed (RPM)	2600
Sone	2.5
Dual Intake	4"
Discharge	5"
Dimensions	10-1/2" x 11" x 6"
Fan Weight	12 lb

Add ons (Optional)	
	Amp Sensors AS-0 AS-5
	Air Pressure Sensing Switch SDS-10

RANGEHOODS



RANGEHOODS

2 SPEED RANGEHOOD FANS

Cabinet mounted rangehood



Model	OD-22014
Wattage	90W
Voltage	120V AC
Material	Stainless steel
Airflow	220 CFM
No. of Motor	Single
No. of Speed	2 speed
Control	Built-in push button

Colour Availability



OD-22014 WH
White



OD-22014 SN
Satin Nickel

3 SPEED RANGEHOOD FANS

Cabinet mounted rangehood



Model	OD-6091	OD-6092
Wattage	90W Fan / 180W Motor	180W Fan / 210W Motor
Voltage	120V AC	
Material	Stainless steel	
Airflow	225 CFM	600 CFM
No. of Motor	Single	Double
No. of Speed	3 speed	
Control	Built-in push button	

Colour Availability



OD-6091/6092 WH
Gloss White



OD-6091/6092 SN
Satin Nickel

NEW

ARRIVAL

OD-19040

30 inch Under - Cabinet Kitchen Rangehood Fan



Model	OD-19040
Wattage	90W
Voltage	120V AC
No. of Motor	Single
Airflow	190 CFM (High Speed) 100 CFM (Low Speed)
No. of Motor	Single
No. of Speed	2 speed
Control	Built-in push button

DESCRIPTION:

- For outdoor or indoor vented installations (Ducted or non-Ducted)
- Mounting height: 18 inch to 24 inch from cooktop to bottom of hood
- Aluminum grease filter
- *Black colour is only available upon request for bulk quantities*

AVAILABLE FINISHES:



NEW

ARRIVAL

OD-RH320

30 inch Under - Cabinet Kitchen Rangehood Fan



Model	OD-RH320
Grease Filters	Open Mesh (Qty. 2)
Voltage	120V AC
Mounting Height	18 inch to 24 inch from cooktop to bottom of hood
Airflow	320 CFM (High Speed) 220 CFM (Medium Speed) 120 CFM (Low Speed)
Lighting	2x5W GU10
No. of Speed	3 speed
Control	Built-in push button

DESCRIPTION:

- For outdoor or indoor vented installations (Ducted or non-Ducted)
- Includes 2 dishwasher-safe aluminum filters and 1 charcoal filter
- Includes alluminum grease filter

AVAILABLE FINISHES:



RANGEHOODS

NEW

ARRIVAL

OD-RH600

30 inch Under - Cabinet Kitchen Rangehood Fan



Model	OD-RH600
Airflow	600 CFM (High Speed)
Voltage	120V AC
Mounting Height	18 inch to 24 inch from cooktop to bottom of hood
Rectangular Vent	Vertical/Horizontal 3-1/4" x 10"
Round Vent	Vertical 6"
No. of Speed	3 speed
Control	Built-in touch control

DESCRIPTION:

- 3 speed with stainless steel touch control
- Includes baffle filters
- Includes energy-efficient LED lighting

AVAILABLE FINISHES:



ERV / HRV

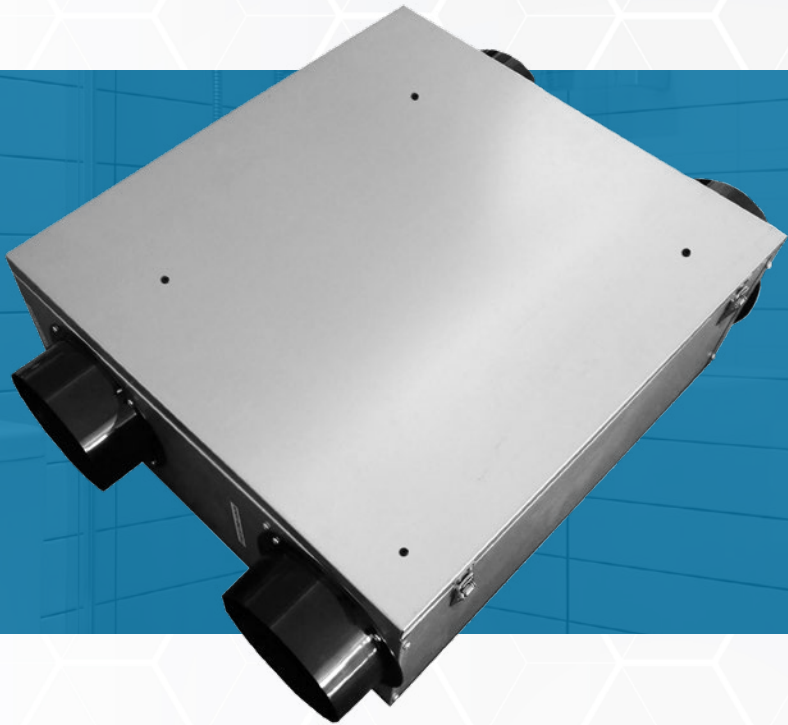


OD-ERV 150AC

Ventilator with efficient cross-flow core and pressure ports for air balancing

DESCRIPTION:

- 24VAC connection for interlock with air handler
- LED indicators for filter replacement and unit troubleshooting
- 50-100% humidity sensor to limit operation during excessive humidity conditions
- Temperature sensor to limit operation during very low temperatures, < 25F (defrost)



(OPTIONAL)

Manual override switch (MOS) can be used in conjunction with a powered wall mounted delay timer, using a plug-in relay (not included), to boost the unit into high-speed operation for specified time.

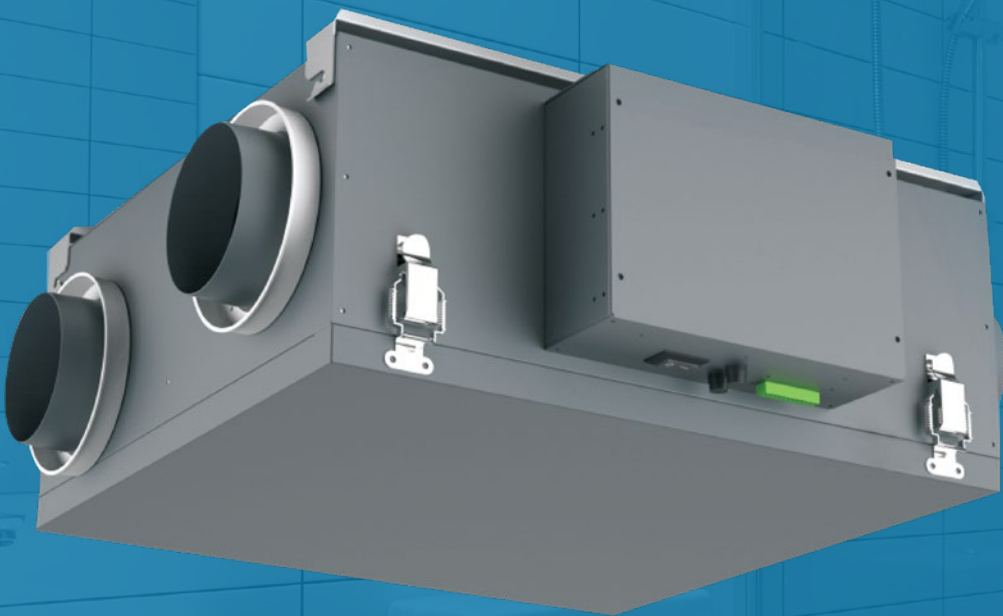
Airflow (CFM)	ESP (in w.g.)		Estimated HVI		Power		Speed
	FA	RA	SRE	ASRE	Watts	CFM/W	
125	0.40	0.43	46	52	125	1.00	High
22	0.40	0.40	68	80	38	0.58	Minimum
55	0.10	0.10	62	67	39	1.41	Low

Speed Setting	Airflow (CFM)	Sones
High	125	4.8
Low	55	2.1
Minimum	22	2.4

ODD-ERV-80
Energy Recovery Ventilator with
efficient cross-flow core

DESCRIPTION:

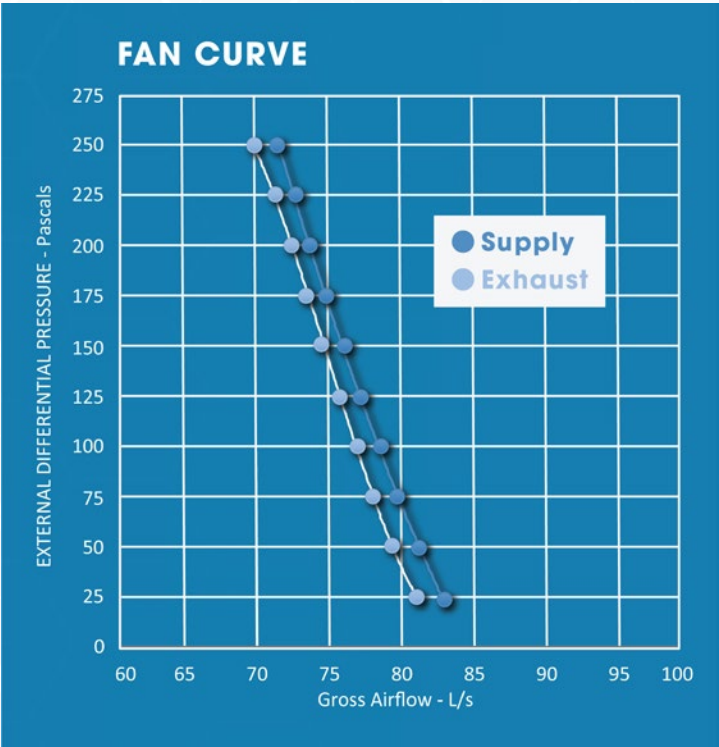
- Brings a continuous supply of fresh air into the home while exhausting contaminated air
- Equipped with automatic defrost mechanisms so you can use your ERV all year long
- Super Compact Size: 22 3/4*21 31/32*8 57/64 inches
- Includes Easy-Mount Bracket
- Washable Graphene Modified Polymer Membrane Energy Recovery Core
- Easy Access Service Door
- Configurable motors for balancing
- Case: Galvanized steel/Pre-paint steel
- Insulation: Cabinet is fully insulated with high density expanded polystyrene
- Filter: Two (2) washable primary air filters
- Push button timer switch



Model	OD-ERV-80
Max. Wattage	57W
Voltage	120V /60Hz
Max. Amps	0.8A
Duct Size	5"

ECM TECHNOLOGY
Our new ECM Technology allows our fan to provide efficient comfort & ventilation even at high static pressure

Airflow	Net Outdoor Airflow	Sensible Recovery Efficiency	Adjusted Sensible Recovery Efficiency
Low	43.4 CFM	76.9%	83.7%
Mid	54 CFM	74.7%	79.7%
High	64.4 CFM	72.5%	76.1%

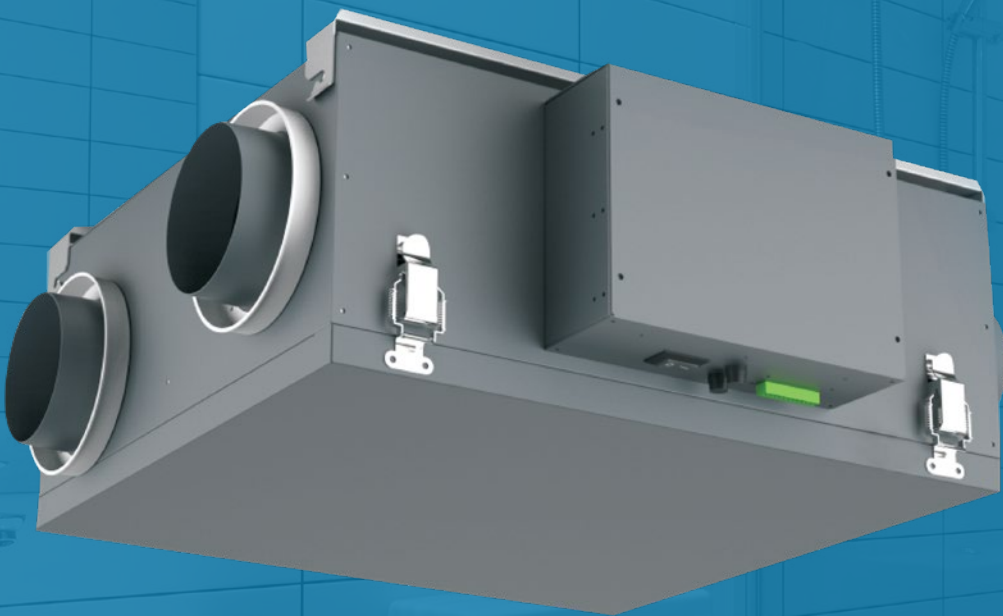


ODD-ERV-120

Energy Recovery Ventilator with efficient cross-flow core

DESCRIPTION:

- Brings a continuous supply of fresh air into the home while exhausting contaminated air
- Equipped with automatic defrost mechanisms so you can use your ERV all year long
- Super Compact Size: 24 11/64*26 13/16*9 11/64 inches
- Includes Easy-Mount Bracket
- Washable Graphene Modified Polymer Membrane Energy Recovery Core
- Easy Access Service Door
- Configurable motors for balancing
- Case: Galvanized steel/Pre-paint steel
- Insulation: Cabinet is fully insulated with high density expanded polystyrene
- Filter: Two (2) washable primary air filters
- Push button timer switch

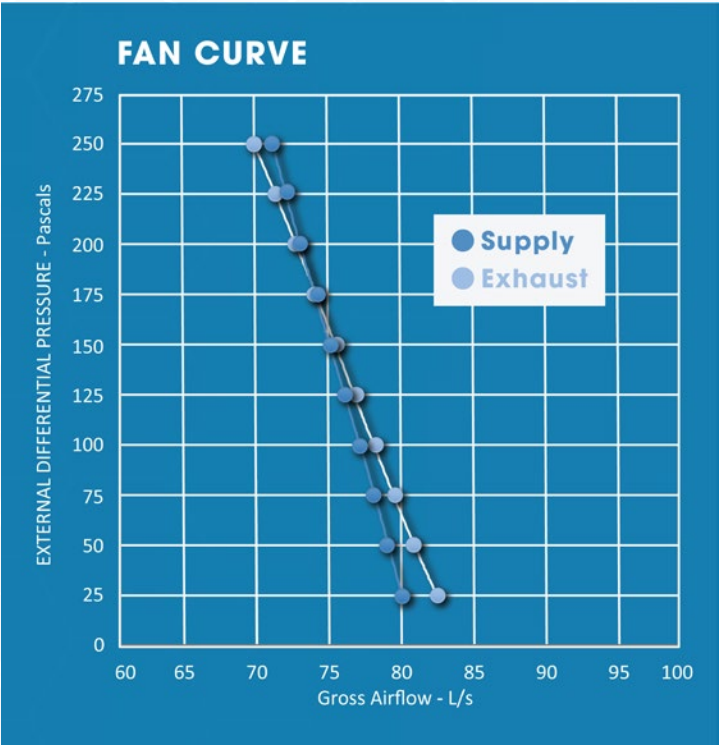


Model	OD-ERV-120
Max. Wattage	96W
Voltage	120V /60Hz
Max. Amps	1.32A
Duct Size	5"

ECM TECHNOLOGY

Our new ECM Technology allows our fan to provide efficient comfort & ventilation even at high static pressure

Airflow	Net Outdoor Airflow	Sensible Recovery Efficiency	Adjusted Sensible Recovery Efficiency
Low	67.8 CFM	76.7%	76.7%
Mid	97.2 CFM	70.6%	70.6%
High	107 CFM	69.3%	73.4%

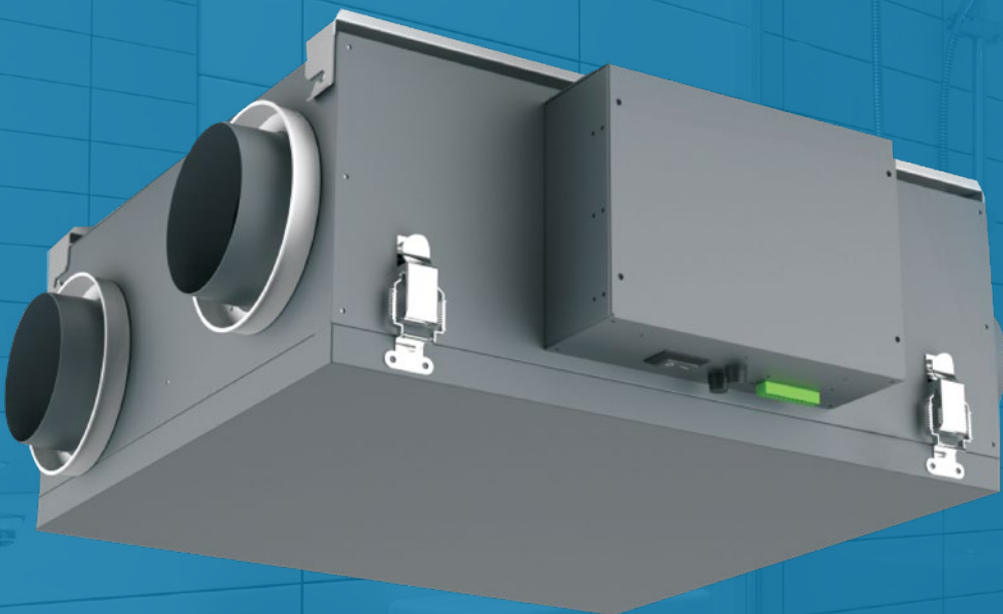


ODD-ERV-150

Energy Recovery Ventilator with efficient cross-flow core

DESCRIPTION:

- Brings a continuous supply of fresh air into the home while exhausting contaminated air
- Equipped with automatic defrost mechanisms so you can use your ERV all year long
- Super Compact Size: 24 11/64*26 13/16*9 11/64 inches
- Includes Easy-Mount Bracket
- Washable Graphene Modified Polymer Membrane Energy Recovery Core
- Easy Access Service Door
- Configurable motors for balancing
- Case: Galvanized steel/Pre-paint steel
- Insulation: Cabinet is fully insulated with high density expanded polystyrene
- Filter: Two (2) washable primary air filters
- Push button timer switch

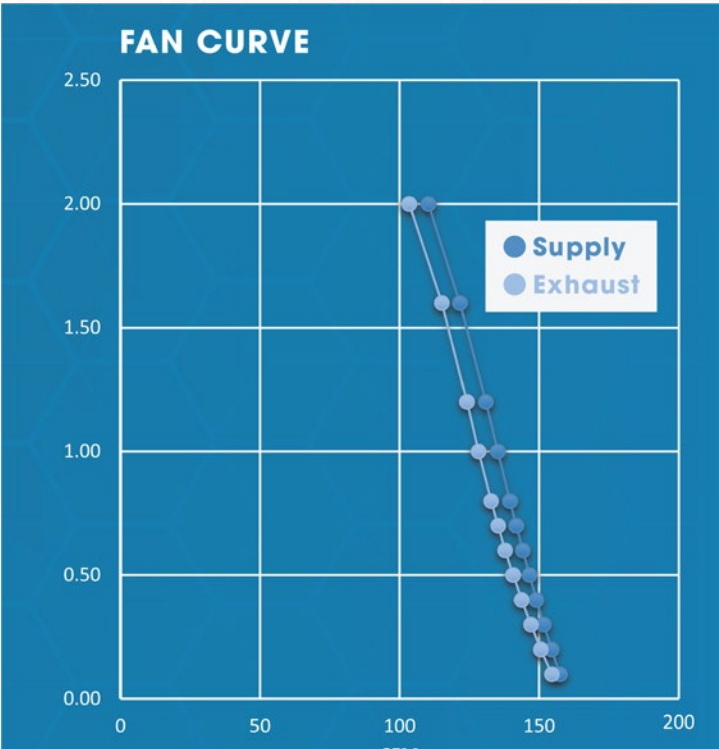


Model	OD-ERV-150
Max. Wattage	165W
Voltage	120V /60Hz
Max. Amps	2.16A
Duct Size	5"

ECM TECHNOLOGY

Our new ECM Technology allows our fan to provide efficient comfort & ventilation even at high static pressure

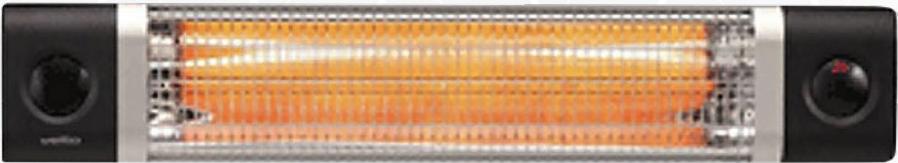
Airflow	Net Outdoor Airflow	Sensible Recovery Efficiency	Adjusted Sensible Recovery Efficiency
Low	68.4 CFM	71%	76%
Mid	100.8 CFM	66%	72%
High	148.7 CFM	61%	70%





HEATERS

HEATERS



INFRARED CARBON HEATERS

Commercial grade robust and weatherproof heaters



DESCRIPTION:

- Efficient energy saving
- For both ceiling and wall mounting
- Suitable for both indoor/outdoor

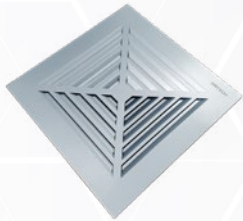
Model	HS-CH 1500W	HS-CH 2500W
Wattage	1500W	2500W
Voltage	120V AC	240V AC
Amps	10A	16A
Phase	I	
Material	Aluminum, Polymeric resin	
Rating	IC Rated / Indoor & Outdoor use	
Grade of Protection	IP 55	
Finish	Super resistant polyester powdercoat	
Control	Timer / power setting with ON/OFF switch	
Coverage Area	172.2-257.6 ft²	183-279.9 ft²
Unit Dimensions	87.7 cm x 19.6 cm x 8.4 cm	



ACCESSORIES

ACCESSORIES

GRILLES



OD-ALG

13" aluminum grille for Premium & Universal Series fans

Specifications		Compatible Item(s)
Size	13" x 13"	
Colour	Brushed nickle finish	
		ODD-110 ODD-110-18PB OD45-9005PB OD45-1109PB OD-9005PB OD-1109PB OD-1209PB OD-1505PB



OD-DCLEDMSG

13" x 14" polymeric LED light grille with motion sensor for ODD-110

Specifications		Compatible Item(s)
LED Light Wattage	11W	
LED Light Lumens	960 lmn	
LED Light Temperature	4000K (Natural White)	
LED Night Light Wattage	2W	
LED Night Light Lumens	220 lmn	ODD-110 ODD-110-18PB
LED Night Light Temp.	4000K (Natural White)	
Colour	White	
Size	13-1/8" x 14"	

GRILLES



OD-G0809

9" polymeric replacement grille for Micro Compact Series fans

Specifications		Compatible Item(s)	
Size	9" x 9-1/2"		ODM-5004 ODM-8010
Colour	White		



OD-G1111

11" polymeric replacement grille for Compact Series fans

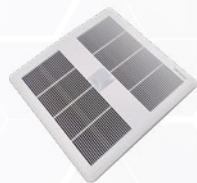
Specifications		Compatible Item(s)	
Size	11-7/8" x 11-3/8"		ODD-100S ODD-100HS ODC-1008 ODC-8003
Colour	White		



OD-G1314

13" x 14" polymeric replacement grille for Universal series fans

Specifications		Compatible Item(s)	
Size	13-1/8" x 14"		ODD-110 ODD-110-18PB OD45-9005PB OD45-1109PB OD-9005PB OD-1109PB OD-1209PB OD-1505PB
Colour	White		



OD-MSG

13" x 14" polymorphic grille for Universal Series fans

Specifications		Compatible Item(s)	
Size	13-1/8" x 14"		ODD-110 ODD-110-18PB OD45-9005PB OD45-1109PB OD-9005PB OD-1109PB OD-1209PB OD-1505PB
Colour	White		

GRILLES



OD-STG


13" x 14" steel grille for Universal & Super Slim Series fans

Specifications		Compatible Item(s)
Size	13-1/8" x 14"	
Colour	White	ODDSS-100-3 ODDSS-100-3HS
		
		ODD-110 ODD-110-18PB OD45-9005PB OD45-1109PB OD-9005PB OD-1109PB OD-1209PB OD-1505PB



OD-LTGLED


13" x 14" polymeric replacement grille for Universal series fans

Specifications		Compatible Item(s)
LED Light Wattage	13W	
LED Night Light Wattage	3W	
Lumens	900 lmn	
Colour Temperature	4000K (Natural White)	ODD-110 ODD-110-18PB OD45-9005PB OD45-1109PB OD-9005PB OD-1109PB OD-1209PB OD-1505PB
Colour	White	
Size	13-1/8" x 14"	



ODM-LLG

8" x 9" polymeric LED light grille for Micro Compact Series fans

Specifications		Compatible Item(s)
Wattage	11W	
Lumens	1000 lmn	
Colour Temperature	4200K (Natural White)	
Colour	White	
Size	8-7/16" x 9-3/4"	ODM-5004 ODM-8010

GRILLES



OD-LEDMSG
13" x 14" LED light grille with motion sensor for Universal Series fans

Specifications		Compatible Item(s)
LED Light Wattage	11W	 OD45-9005PB OD45-1109PB OD-9005PB OD-1109PB OD-1209PB OD-1505PB
LED Light Lumens	960 lmn	
LED Light Temperature	4000K (Natural White)	
LED Night Light Wattage	2W	
LED Night Light Lumens	220 lmn	
LED Night Light Temp.	4000K (Natural White)	
Colour	White	
Size	13-1/8" x 14"	



OD-LLG
11" LED light polymeric grille for Compact Series fans

Specifications		Compatible Item(s)
Wattage	11W	 ODD-100S ODD-100HS ODC-1008 ODC-8003
Lumens	800 lmn	
Colour Temperature	4200K (Natural White)	
Colour	White	
Size	11-7/16" x 11-13/16"	



OD-LLG-MS
11" LED light grille with motion sensor for Compact Series fans

Specifications		Compatible Item(s)
Wattage	11W	 ODD-100S ODD-100HS ODC-1008 ODC-8003
Lumens	350 lmn	
Colour Temperature	4200K (Natural White)	
Colour	White	
Size	11-7/16" x 11-13/16"	

AMP SENSORS

Amp sensors with high current AC switch and dryer control



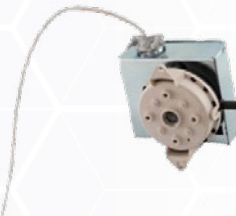
DESCRIPTION:

- Requires no field adjustment
- AS-0 is without time delay
- Designed to mount in a standard electrical box
- Only two wire connections needed for easy installation

Model	Time Delay	Output	Switch V	Switch I	Leakage	Input I Min	Input I
AS-0	None	TRIAC	120V AC	2.5 Amps	< 1 mA	~ 0.5 Amp	50 Amps
AS-5	5 minutes						
AS-10	10 minutes						
AS-15	15 minutes						

AIR PRESSURE SENSING SWITCH

Air pressure sensing switch with electric cycle timing board



DESCRIPTION:

- 10 minutes timing range
- SPST Electrical Load: 3A resistive at 24 & 120 to 277V AC

Model	SDS-10
SPDT/SPST Electrical Load	1/10 HP at 120-277V AC
28VA Pilot Duty	at 24V AC
125VA Pilot Duty	at 120V AC

Included for SDS-10
Electronic cycle timing module, 10 min-ON-15 sec-OFF
3 conductor cable with ground, 10" long external length
Probe accessory kit, with 2" long insert probe and (4) #8 x 1/2 square drive (Type TEK) screws
Switch enclosure with removable cover will accept 3-1/2" conduit connections

Compatible Item(s)	
	ODDMF Fans ODDMF-4-160 ODDMF-6-350 ODDMF-8-710 ODDMF-10-1065 ODDMF-12-1750 ODDMF-6-350-Q ODDMF-8-710-Q ODDMF-10-1065-Q ODDMF-12-1750-Q
	OIF Series Inline Fans OIF4-140 OIF5-190 OIF6-260 OIF8-560 OIF10-670 OIF12-880
	Dryer Booster Fans SDF-200 SDF200-2
	

SPEED CONTROLLERS



ODC-SCK

Speed controller for Compact Series fans

DESCRIPTION:

- Can set the motor speed however the user like
- Allows full compliance with ASHRAE 62.2 using a single product (in most applications)



ODM-SCK

Speed controller for Micro Compact Series fans

DESCRIPTION:

- Can set the motor speed however the user like
- Allows full compliance with ASHRAE 62.2 using a single product (in most applications)

Compatible Item(s)	
	ODC-1008 ODC-8003 ODD-100HS ODD-100MS ODD-100HS+MS

Compatible Item(s)	
	ODM-5004 ODM-8010

HUMIDITY SENSOR



WM-DWHS

Reduces bathroom condensation

DESCRIPTION:

- Auto ON/OFF function
- Energy efficient, saves energy

Model	WM-DWHS
Voltage	120V AC /60Hz
Max. Fan Load	3A
Max. Fan Time Delay	30 minutes
Humidity Range	45% ~ 80% RH

MOTION SENSOR



DWOS

12A passive infrared sensor with ambient light level sensor

DESCRIPTION:

- One relay (equal to single pole switch)
- Turns load on & hold when detecting occupancy

Model	DWOS
Voltage	120V AC /60Hz
Resistive	12A
Time Delay	15 seconds ~ 30 minutes
Light Level	30 Lux — Daylight

HUMIDITY & MOTION SENSOR



WM-DHOS

Single pole with interchangeable face cover

DESCRIPTION:

- 180° field of view & 600 ft² coverage
- Easily replaces existing standard switch
- Automatically activates fan when humidity is detected
- For incandescent, fluorescent, halogen and LED lighting

Model	WM-DHOS
Voltage	120V AC /60Hz
Fan Load	1/4 HP (3A)
Time Delay	15 sec & 5/15/30 minutes
Humidity Range	45% ~ 80% RH

IN-WALL TIMERS



HET01-R

7-day programmable with daylight saving feature

DESCRIPTION:

- Built-in clock function
- Large digital LCD display
- Built-in memory holds settings indefinitely without power
- Either automatic or manual operation possible

Model	HET01-R
Output	120V AC /60Hz
Resistive	15A



HET06-R

Commercial grade countdown single pole preset timer

DESCRIPTION:

- 6 time selection buttons with activation indicator lights
- ON/OFF button with hold on function
- Works with most common lighting types
- Can replace either standard lights or fan single pole switches

Model	HET06-R
Output	125V AC /60Hz
Resistive	15A

CHANGE YOUR LIFE
WITH A SIMPLE SWITCH



SPEED CONTROLLERS



OD-SCV-5A

Fully variable 5 amps rotary pole speed control for ORTECH DC motor fans

DESCRIPTION:

- Single pole

Model	OD-SCV-5A
Voltage	120V AC /60Hz
Amps	5A
Type	Fully variable
Pole	Single



OD-SCV-10A

Fully variable 10 amps rotary pole speed control for ORTECH DC motor fans

DESCRIPTION:

- Single pole

Model	OD-SCV-10A
Voltage	120V AC /60Hz
Amps	10A
Type	Fully variable
Pole	Single

FIRE DAMPER-PB

Fire damper for Universal Series fans

DESCRIPTION:

- Has a flexible fire blanket
- Link that is of +165°F standard
- Steel rolled springs included
- 21 gauge galvanized steel for frame
- Ceiling radiation damper with 3 hour rating
- Includes fiber glass cover and ceramic fiber
- The force of one springs is no less than 4.496 lbf
- Comes with roll-framed frame made of galvanized steel



Compatible Item(s)

ODD-110-18PB
OD45-9005PB
OD45-1109PB
OD-9005PB
OD-1109PB
OD-1209PB
OD-1505PB



FIRE DAMPER-ODC

Fire damper for Compact Series fans

DESCRIPTION:

- Has a flexible fire blanket
- Link that is of +165F standard
- Spring steel rolled springs included
- 21 gauge galvanized steel for frame
- Ceiling radiation damper with 3 hour rating
- Includes fiber glass cover and ceramic fiber
- 25 gauge galvanized steel for damper adapter



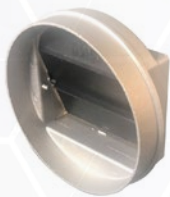
Compatible Item(s)

ODC-1008
ODC-8003
ODD-100S
ODD-100HS
ODD-100MS
ODD-100HS+MS



DUCTWORK
6IN COLLAR

6" polymeric collar for ventilation fans



ADA 4 TO 6

Universal Series adapter for 4"-6" duct that fits all around duct designs



ADA 6 TO 4

Universal Series adapter for 6"-4" duct that fits all around duct designs



BDA

Back draft damper for airflow control in ventilation systems



DESCRIPTION:

- For mounting between ducts
- Available in 4", 5", 6", 8", 10", 12" sizes
- Can function in both horizontal and vertical positions

LINT TRAP-DS

Dual size lint trap for catching lint



DESCRIPTION:

- Used when installing dryer booster fan less than 15ft distance from the back of the dryer

PAV-B

Polymeric air valve for air supply and exhaust in ventilation systems



DESCRIPTION:

- Available in 4", 5", 6", 8" sizes
- To be mounted into round duct by mounting frame
- Polypropylene body with adjustable core and thread

SAV

Steel supply air valve with adjustable core



DESCRIPTION:

- Available in 4", 5", 6", 8" sizes
- Pressed steel grill with adjustable core
- Supplied with galvanized steel mounting frame
- All steel construction material with RAL 9016 and RAL 9010 for its colour

ODB-100

Residential grade wall recessed white metal dryer box that fits 2x6 stud size



DESCRIPTION:

- Protects exhaust duct in the wall
- Allows the dryer to perform at its peak efficiency
- Saves space & energy; contributes to reducing fire hazard
- Places dryer flush to wall without crushing exhaust hose or restricting airflow

ODB4-100

Residential grade wall recessed white metal dryer box that fits 2x4 stud size



DESCRIPTION:

- Protects exhaust duct in the wall
- Allows the dryer to perform at its peak efficiency
- Saves space & energy; contributes to reducing fire hazard
- Places dryer flush to wall without crushing exhaust hose or restricting airflow

VB-6-S

Commercial grade vapour barrier for fans



DESCRIPTION:

- 50 per standard packing
- +90°C temperature rating
- Made of heavy duty polyethylene
- Applicable for most building codes

ACCESSORIES

CAD

Access door to inspect and maintain round & spiral ventilation ducts

DESCRIPTION:

- Inexpensive curved access door
- For resetting dampers, cleaning filters, or regular maintenance
- Available in CAD 200 (9"x6"), CAD 250 (8"x4") and CAD 300 (16"x12") sizes



IAD SERIES

Indoor access door for typical ductwork

DESCRIPTION:

- Available in 8"x5", 12"x6", 18"x10", 21"x14" sizes
- Comes with retaining chain between door & frame
- Offers convenient quick access to volume control dampers, coils, filters, and equipment



FAP

Flush access panel with welded frame and strong durable door lid

DESCRIPTION:

- Screwdriver operated cam latch
- Easy installation — no further painting required
- Available in 30" (FAP-30X30) and 38"x26" (FAP-38X26) sizes
- With concealed hinge, the door leaf can be opened from either left or right
- High durability and corrosion protection from white powder coated finish / coating in special colours



MAP

Mud access panel with beaded edge

DESCRIPTION:

- Screwdriver operated cam latch
- Easy to install adjustable fixing flat
- Available in 18" (MAP-18X18), 24" (MAP-24X24), 30" (MAP-30X30) sizes
- Fully concealed door hinge makes door leaf opening from either left or right possible
- Paintable gray powder coated finish provides high durability and corrosion protection



WHEN YOUR HOME BREATHES, YOU BREATHE EASIER TOO.

THE QUALITY OF INDOOR AIR CAN BE

5 TIMES

MORE POLLUTED THAN THE OUTSIDE AIR

CANADIANS SPEND ABOUT

85%

OF THEIR TIME INDOORS



At **Ortech Industries Inc.**, you can find solutions to all your lighting, electrical & HVAC needs. From our humble beginnings in 2004, when we were just a small supplier specializing in a few select markets; we have now cemented ourselves as industry leaders across North America. Through efficient use of our network in Hong Kong and China, we have delivered a wide range of innovative and economical lighting, electrical & HVAC products.

Ortech is an industry leader in **LED lighting, LED fireplaces and ventilation fans**. We also offer items like electrical boxes and metal plates, making us your electricians favourite one-stop shop. All our products are certified by the necessary American and Canadian standards, and are primarily distributed through lighting showrooms, electrical wholesalers and HVAC distributors.

ORTECH reserves the right to modify at any time, without notice, any or all of our product's features, designs, components and specifications.

Ortech products are distributed in North America by **Crown Distributors Ltd.**



NOTES:

[illegible]



13376 Comber Way, Surrey, BC V3W 5V9
205 Summerlea Rd, Brampton, ON L6T 4E5

1-888-543-6473
info@ortechindustries.com