

# ELECTRICAL

CATALOGUE 2024



**ORTECH**  
[www.ortechindustries.ca](http://www.ortechindustries.ca)

## QUALITY MATTERS

**Ortech Industries Inc.** is proud to provide you the highest quality construction materials. We pride ourselves on delivering the highest quality, so you can focus on what matters most to you.

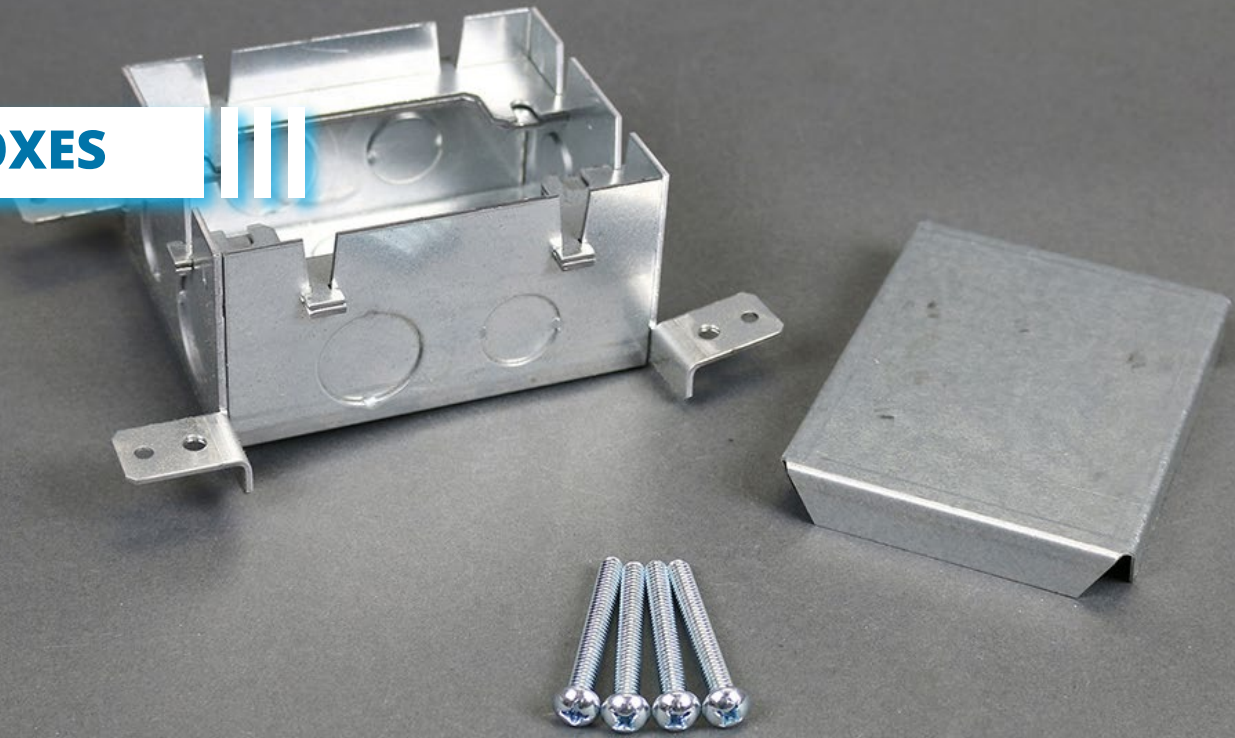
Since our inception in 2004, we have stood by our products, providing customers with the most reliable construction materials ranging from lighting, electrical and ventilation products.

Now a national supplier, ORTECH products can be found in more than 2 million homes across Canada and the USA.

## TABLE OF CONTENTS

<b>Boxes</b>	<b>4</b>
<b>Drivers</b>	<b>18</b>
<b>Miscellaneous</b>	<b>22</b>
<b>Plates</b>	<b>25</b>
<b>Recessed Lighting</b>	<b>28</b>
<b>Wiring Devices</b>	<b>34</b>



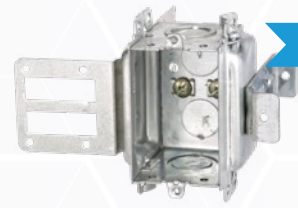


### 3104-KSSX

Gangable electrical device box for supporting a device into a wall

#### DESCRIPTION:

- With concentric knockouts
- Assemble sides for more stability
- Wraparound Bracket for 2-1/2" & 3-5/8" steel studs
- With AC90/NMD cable clamps, wraparound bracket & integral support bracket



METAL BOX



Model	3104-KSSX
Application	New work
Material	Galvanized steel
Box Type	Steel stud wall
Construction Type	Assemble
Cover Included	None
Knockout Options	4 pry outs

METAL BOX

### 52151-KSSX

Square steel junction box with wraparound bracket

#### DESCRIPTION:

- 4" x 4" x 1-1/2"
- Made of galvanized steel
- 4" square shallow "Wraparound" box
- For 2-1/2" & 3-5/8" steel studs with integral support bracket



Model	52151-KSSX
Application	New work
Material   Box Type	Galvanized steel   Wraparound box
Construction Type	Assemble
Cover Included	None
Knockout Options	Noa 7-1/2" x 3-3/4" (side) & 4-1/2" x 2-3/4" (bottom)

### 54171-K

Steel octagonal junction box with clamps and raised earth grounding

#### DESCRIPTION:

- 4" x 4" x 2-1/8"
- Made of galvanized steel
- 4" octagonal junction box
- With concentric knockouts & raised earth grounding



METAL BOX

Model	54171-K
Application	New work
Material	Galvanized steel
Box Type	Junction box
Construction Type	Drawn
Cover Included	None
Knockout Options	4-1/2" x 2-3/4" (side) & 4-1/2" x 2-3/4" (bottom)

### 54171-KSSX

Octagonal steel stud box with wraparound bracket and clamps

#### DESCRIPTION:

- 4" x 4" x 2-1/8"
- Made of galvanized steel
- For 2-1/2" & 3-5/8" steel studs with integral support
- 4" octagonal steel stud box with wraparound bracket



METAL BOX

Model	54171-KSSX
Application	New work
Material	Galvanized steel
Box Type	Steel stud box
Construction Type	Drawn
Cover Included	None
Knockout Options	2-1/2" x 2-3/4" (side) & 4-1/2" x 2-3/4" (bottom)

### 777LRB

Outlet easy box with pivoting ends for rework installation

**DESCRIPTION:**

- 3" x 2" x 2-1/4"
- Made of galvanized steel
- Max. wall thickness 1-1/8"
- Pivoting ends for rework installation



METAL BOX



Model	777LRB
Application	Rework installation
Material	Galvanized steel
Box Type	Easy box
Construction Type	Assemble
Cover Included	None
Knockout Options	1-1/2" (bottom)

### BOX 1104-L

Single gangable device box with flush ears

**DESCRIPTION:**

- 3" x 2" x 2-1/2"
- Made of galvanized steel



METAL BOX



Model	BOX 1104-L
Application	New work
Material	Galvanized steel
Box Type	Gangable device box
Construction Type	Assemble
Cover Included	None
Knockout Options	None

### BOX 1104-LA

Single gangable device box with flush ears

**DESCRIPTION:**

- 3" x 2" x 2-1/2"
- Made of galvanized steel



METAL BOX



Model	BOX 1104-LA
Application	New work
Material	Galvanized steel
Box Type	Gangable device box
Construction Type	Assemble
Cover Included	None
Knockout Options	None

### BOX 1104-LHA

Single gangable device box with two embossed mounting slots

**DESCRIPTION:**

- 3" x 2" x 2-1/2"
- Made of galvanized steel
- Positioning tabs provision for external nailing
- Two embossed mounting slots for internal screw installation



METAL BOX



Model	BOX 1104-LHA
Application	New work
Material	Galvanized steel
Box Type	Gangable device box
Construction Type	Assemble
Cover Included	None
Knockout Options	None

### BOX 1110 (FORMERLY A-1B)

Single gang steel utility box with knockouts for surface mounting

**DESCRIPTION:**

- 4" x 2-1/2" x 1-7/8"
- Made of galvanized steel



METAL BOX



Model	BOX 1110
Application	New work
Material	Galvanized steel
Box Type	Utility box
Construction Type	Drawn
Cover Included	None
Knockout Options	8-1/2" (side) & 2-1/2" (bottom)

### BOX 1110-R

One gang rectangular device cover with extension ring

**DESCRIPTION:**

- 4" x 2-1/2" x 1-7/8"
- Rectangle utility box made of galvanized steel



METAL BOX



Model	BOX 1110-R
Application	New work
Material	Galvanized steel
Box Type	Steel stud box
Construction Type	Drawn
Cover Included	None
Knockout Options	2-1/2" x 2-3/4" (side) & 4-1/2" x 2-3/4" (bottom)



### BOX 2104-LLE (FORMERLY A-2D)

Single gang device box with clamps

**DESCRIPTION:**

- 3" x 2" x 2-1/2"
- Made of galvanized steel & holds prongs prepositioned depth tabs



METAL BOX



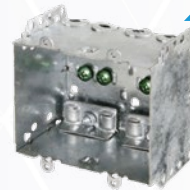
Model	BOX 2104-LLE
Application	New work
Material	Galvanized steel
Box Type	Single gang device box
Construction Type	Riveting
Cover Included	None
Knockout Options	None

### BOX 2104-LLE2 (FORMERLY A-2D-1)

Two gang device box with clamps

**DESCRIPTION:**

- 3" x 3-3/4" x 2-1/2"
- Made of galvanized steel & holds prongs prepositioned depth tabs



METAL BOX



Model	BOX 2104-LLE2
Application	New work
Material	Galvanized steel
Box Type	Two gang device box
Construction Type	Riveting
Cover Included	None
Knockout Options	None

### BOX 2104-LLE3 (FORMERLY A-2D-2)

Three gang device box with clamps

**DESCRIPTION:**

- 3" x 5-1/2" x 2-1/2"
- Made of galvanized steel & holds prongs prepositioned depth tabs



METAL BOX



Model	BOX 2104-LLE3
Application	New work
Material	Galvanized steel
Box Type	Three gang device box
Construction Type	Riveting
Cover Included	None
Knockout Options	None

### BOX 2104-LLE4 (FORMERLY A-2D-3)

Four gang device box with clamps

**DESCRIPTION:**

- 3" x 7-3/8" x 2-1/2"
- Made of galvanized steel & holds prongs prepositioned depth tabs



METAL BOX



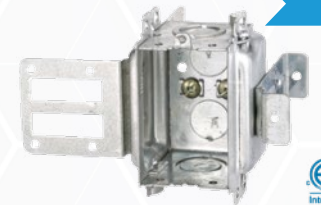
Model	BOX 2104-LLE4
Application	New work
Material	Galvanized steel
Box Type	Four gang device box
Construction Type	Riveting
Cover Included	None
Knockout Options	None

### BOX 3102-KSSX

Gangable single box with assemble sides for more stability

**DESCRIPTION:**

- Can be used to support a device into the wall
- With concentric knockout and wrap around bracket 12CU.IN.



METAL BOX



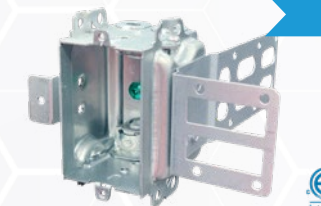
Model	BOX 3102-KSSX
Application	New work
Material	Galvanized steel
Box Type	Gangable device single box
Construction Type	Assemble
Cover Included	None
Knockout Options	End 2

### BOX 3104-LSSAX

Single gangable device box with wraparound bracket

**DESCRIPTION:**

- 3" x 2" x 2-1/2"
- 2-1/2" & 5/8" steel studs with integral support bracket



METAL BOX



Model	BOX 3104-LSSAX
Application	New work
Material	Galvanized steel
Box Type	Gangable device single box
Construction Type	Assemble
Cover Included	None
Knockout Options	None

### BOX 52151-K (FORMERLY A-2A)

4" square steel conduit box with concentric knockouts

**DESCRIPTION:**

- 4" x 4" x 1-1/2"
- Made of galvanized steel & with raised earth grounding



METAL BOX



Model	BOX 52151-K
Application	New work
Material	Galvanized steel
Box Type	Conduit box
Construction Type	Assemble
Cover Included	None
Knockout Options	10-1/2" x 6-3/4" (side) & 4-1/2" x 2-3/4" (bottom)

### BOX 54151-K (FORMERLY A-5B-2)

4" octagonal box with concentric knockouts

**DESCRIPTION:**

- 4" x 4" x 1-1/2"
- Made of galvanized steel



METAL BOX



Model	BOX 54151-K
Application	New work
Material	Galvanized steel
Box Type	Octagonal box
Construction Type	Drawn
Cover Included	None
Knockout Options	4-1/2" x 2-3/4" (side) & 4-1/2" x 2-3/4" (bottom)

### BOX 54151-KSSX

4" octagonal box with integral support & wraparound bracket

**DESCRIPTION:**

- 4" x 4" x 1-1/2"
- Steel studs with integral support bracket
- With concentric knockouts
- Wraparound bracket for 2-1/2" & 3-5/8" steel studs



METAL BOX



Model	BOX 54151-KSSX
Application	New work
Material	Galvanized steel
Box Type	Octagonal box
Construction Type	Drawn
Cover Included	None
Knockout Options	2-1/2" x 2-3/4" (side) & 4-1/2" x 2-3/4" (bottom)

### BOX 54151-LSSAX

Steel octagonal metal box with side bracket and clamps

**DESCRIPTION:**

- 4" x 4" x 1-1/2"
- Holds prongs & prepositioned depth tabs



METAL BOX



Model	BOX 54151-LSSAX
Application	New work
Material	Galvanized steel
Box Type	Octagonal metal box
Construction Type	Drawn
Cover Included	None
Knockout Options	1-1/2" (bottom)

### BOX 54151-LB (FORMERLY A-5B-1)

4" octagonal metal box with side bracket

**DESCRIPTION:**

- 4" x 4" x 1-1/2"
- Holds prongs & prepositioned depth tabs



METAL BOX



Model	BOX 54151-LB
Application	New work
Material	Galvanized steel
Box Type	Octagonal metal box
Construction Type	Drawn
Cover Included	None
Knockout Options	1-1/2" (side) & 1-1/2" (bottom)

### BOX 54171-FB

4" octagon ceiling fan support box

**DESCRIPTION:**

- 4" x 4" x 2-1/8"
- Max weight 70 lbs for fans, 200 lbs for chandeliers



METAL BOX



Model	BOX 54171-FB
Application	Ceiling fan support
Material	Galvanized steel
Box Type	Octagonal box
Construction Type	Drawn
Cover Included	None
Knockout Options	2-1/2" (side) & 1-1/2" (bottom)



### BOX 56111 (FORMERLY A-5)

Round shallow ceiling pan box

**DESCRIPTION:**

- 4" x 1/2"
- Made of galvanized steel



METAL BOX



Model	BOX 56111
Application	Ceiling
Material	Galvanized steel
Box Type	Shallow ceiling pan box
Construction Type	Drawn
Cover Included	None
Knockout Options	4-1/2" (bottom)

### BOX 72171-K (FORMERLY A-2C)

4-11/16" square junction box with concentric knockouts

**DESCRIPTION:**

- 4-11/16" x 4-11/16" x 2-1/8"
- Concentric knockouts with raised earth grounding



METAL BOX



Model	BOX 72171-K
Application	New work
Material	Galvanized steel
Box Type	Square junction box
Construction Type	Assemble
Cover Included	None
Knockout Options	10-1/2" x 6-3/4" (side) & 4-1/2" x 2-3/4" (bottom)

### BOX 72171-KSSX

4-11/16" square stove box with wraparound brackets

**DESCRIPTION:**

- 4-11/16" x 4-11/16" x 2-1/8"
- Wraparound for 2-1/2" and 3-5/8" steel studs



METAL BOX



Model	BOX 72171-KSSX
Application	New work
Material	Galvanized steel
Box Type	Square stove box
Construction Type	Assemble
Cover Included	None
Knockout Options	4-1/2" x 4-3/4" (side) & 4-1/2" x 2-3/4" (bottom)

### BOX BC-2020 (FORMERLY A-1D)

4" single gang steel utility box with knockouts for surface mounting

**DESCRIPTION:**

- 4" x 2-1/8" x 1-7/8"
- Made of galvanized steel



METAL BOX



Model	BOX BC-2020
Application	Surface mounting
Material	Galvanized steel
Box Type	Single gang utility box
Construction Type	Drawn
Cover Included	None
Knockout Options	8-1/2" (side) & 2-1/2" (bottom)

### BOX MBD-1K

One gang masonry box 3-1/2" deep 21CU.IN.

**DESCRIPTION:**

- Multi-gang box with concentric knockouts
- Applicable for either concrete or masonry walls



METAL BOX



Model	BOX MBD-1K
Application	Concrete or Masonry wall
Material	Galvanized steel
Box Type	Multi-gang box
Construction Type	Welded
Cover Included	None
Knockout Options	1/2", 3/4" concentric knockouts (8 sides, 2 bottoms, 3 ends) 1/2", 3/4", 1 in concentric knockouts (1)

### BOX MBD-2K

2 gang masonry box 3-1/2" deep 42CU.IN.

**DESCRIPTION:**

- For concrete/masonry walls
- Multi-gang boxes with concentric knockouts



METAL BOX



Model	BOX MBD-2K
Application	Concrete or Masonry wall
Material	Galvanized steel
Box Type	Multi-gang box
Construction Type	Welded
Cover Included	None
Knockout Options	1/2", 3/4" concentric knockouts (8 sides, 4 bottoms, 6 ends) 1/2", 3/4", 1 in concentric knockouts (2)

### BOX MBD-3K

3 gang masonry box 3-1/2" deep 63CU.IN.

**DESCRIPTION:**

- For concrete/masonry walls
- Multi-gang boxes with concentric knockouts



METAL BOX



Model	BOX MBD-3K
Application	Concrete or Masonry wall
Material	Galvanized steel
Box Type	Multi-gang box
Construction Type	Welded
Cover Included	None
Knockout Options	1/2", 3/4" concentric knockouts (8 sides, 6 bottoms, 9 ends) 1/2", 3/4", 1 in concentric knockouts (3)

### BOX 1104-K

Single gangable device box with recessed ears

**DESCRIPTION:**

- 2" x 2-1/2" x 3"
- Concentric knockouts



METAL BOX



Model	BOX 1104-K
Application	New work
Material	Galvanized steel
Box Type	Gangable device box
Construction Type	Assemble
Cover Included	None
Knockout Options	None

### BOX 777 PRM

One gang electrical box that protects the wire and the connection wire

**AVAILABLE FINISHES:**



Black

**DESCRIPTION:**

- PVC construction for durable performance
- Can be installed both horizontally and vertically
- Used as the long line, or the corner of the wire tube
- Compatible with receptacle, switch, GFCI, dimmer, etc.



NON-METALLIC BOX

Model	BOX 777 PRM
Material	PVC (polyvinyl chloride)
Box Type	Junction box
Construction Type	Junction box
Function	To make the junction box of strong electricity in wooden wall at home
Size	1 gang
Cover Included	None

### SGP01

One gang non-metallic switch & outlet box

**DESCRIPTION:**

- 50 per case & 18 cubic inches
- 2-7/8" x 3-5/8" x 2-1/4"



NON-METALLIC BOX



### SGP02

Two gang non-metallic switch & outlet box

**DESCRIPTION:**

- 50 per case & 37 cubic inches
- 2-7/8" x 3-5/8" x 4-1/8"



NON-METALLIC BOX



### SGP03

Three gang non-metallic switch & outlet box

**DESCRIPTION:**

- 30 per case & 51 cubic inches
- 2-3/4" x 3-5/8" x 5-7/8"



NON-METALLIC BOX



### SGP04

Octagon non-metallic box

**DESCRIPTION:**

- 50 per case & 28 cubic inches
- 2-3/4" x Ø 3-5/8"



NON-METALLIC BOX



### WPB01

Vapour-proof one gang non-metallic switch & outlet box

**DESCRIPTION:**

- 50 per case & 18 cubic inches
- 2-7/8" x 3-3/4" x 2-1/4"



NON-METALLIC BOX



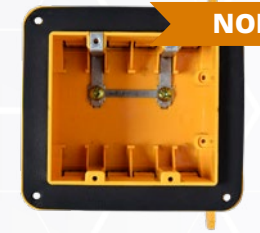


**WPB02**

Vapour-proof two gang non-metallic switch & outlet box

**DESCRIPTION:**

- 50 per case & 37 cubic inches
- 2-7/8" x 3-5/8" x 2-1/8"



NON-METALLIC BOX

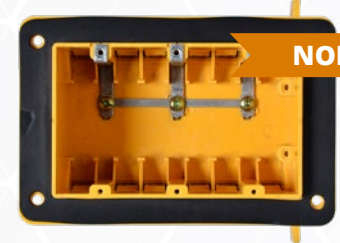


**WPB03**

Vapour-proof three gang non-metallic switch & outlet box

**DESCRIPTION:**

- 50 per case & 51 cubic inches
- 2-7/8" x 3-5/8" x 5-7/8"



NON-METALLIC BOX



**WPB04**

Vapour-proof octagon non-metallic box

**DESCRIPTION:**

- 50 per case & 26 cubic inches
- 2-3/4" x Ø 3-5/8"



NON-METALLIC BOX



**WPB05**

Vapour-proof four gang non-metallic switch & outlet box

**DESCRIPTION:**

- 30 per case
- 2-7/8" x 3-5/8" x 7-3/4"



NON-METALLIC BOX



**WPB06**

Vapour-proof four gang non-metallic switch & outlet box

**DESCRIPTION:**

- 30 per case dryer/range box
- 2-7/8" x 4-11/16" x 4-11/16"



NON-METALLIC BOX







**OT-08D / OT-15D / OT-24D**

Max. 8W/15W/24W class 2 driver for LED lighting & moving sign applications

**DESCRIPTION:**

- Suitable for dry location
- Strong compatibility, flicker-free dimming
- Constant voltage phase TRIAC dimmable driver
- Integrated junction box for hard wire installation
- Fully isolated metal case — cooling by air convection



Model	OT-08D	OT-15D	OT-24D
Input Voltage	100-130V AC		
Output Voltage	12V DC		
Max. Wattage	8W	15W	24W
Amps	0.65A	1.25A	2A
Voltage Range	100-130V AC	108-127V AC	100-130V AC
Dimmable	Yes		
Grade of Protection	IP 20		
Frequency Range	47-63Hz		
Power Factor	0.6 (Full loading)		
Efficiency (Typ.)	80%	80%	82%
AC Current (Max.)	0.17A	0.33A	0.55A
Short Circuit	Hiccup mode, recover automatically after fault condition is removed		
Over Loading	≤ 120%		
Operating Temp.	-30°C ~ +45°C	-25°C ~ +45°C	-30°C ~ +45°C

**OT-60D**

Max. 60W class 2 driver for LED lighting & moving sign applications

**DESCRIPTION:**

- Suitable for dry location
- High efficiency up to 86%
- Strong compatibility, flicker-free dimming
- Constant voltage phase TRIAC dimmable driver
- Integrated junction box for hard wire installation
- Fully isolated metal case — cooling by air convection



Model	OT-60D
Input Voltage	108-127V AC
Output Voltage	12V DC
Max. Wattage	60W
Amps	5A
Voltage Range	100-130V AC
Dimmable	Yes
Grade of Protection	IP 20
Frequency Range	47-63Hz
Power Factor	0.6 (Full loading)
Efficiency (Typ.)	86%
AC Current (Max.)	1.5A
Short Circuit	Hiccup mode, recover automatically after fault condition is removed
Over Loading	≤ 120%
Operating Temp.	-20°C ~ +40°C

**OT-96D**

Max. 96W class 2 driver for LED lighting & moving sign applications

**DESCRIPTION:**

- Suitable for dry location
- High efficiency up to 80%
- Strong compatibility, flicker-free dimming
- Constant voltage phase TRIAC dimmable driver
- Integrated junction box for hard wire installation
- Fully isolated metal case — cooling by air convection



Model	OT-96D
Input Voltage	120V AC
Output Voltage	12V DC
Max. Wattage	96W
Amps	8A
Voltage Range	100-130V AC
Dimmable	Yes
Grade of Protection	IP 20
Frequency Range	50-60Hz
Power Factor	0.75 (Full loading)
Efficiency (Typ.)	80%
AC Current (Max.)	1.6A
Short Circuit	Short & open circuit protection
Over Loading	≤ 120%
Operating Temp.	-20°C ~ +45°C



## 12V DC TDWJ DRIVERS

Available in 12V DC output

### DESCRIPTION:

- Cooling by free air convection
- Suitable for LED lighting & moving sign applications
- Full protection aluminum housing for dry / damp locations
- Match with TRIAC, electronic low voltage, magnetic low voltage dimmers
- PWM (Pulse-width modulation) output, does not change the colour index
- Flicker-free, compatible with forward phase, reverse phase, TRIAC, MLV, ELV dimmers
- Works for 110-277V AC input, 120V & 277V dimmers, allows for flicker free dimming down to 1%



Model	OT-12150-TDWJ	OT-12200-TDWJ	OT-12300-TDWJ
Input Voltage	110-277V AC		
Output Voltage	12V DC		
Max. Wattage	150W	200W	300W
Amps	12.5A	16.66A	25A
Dimmable	Yes		
Frequency Range	47-63Hz		
Powe Factor	0.98 at 120V AC 0.95 at 277V AC	0.98 at 120V AC 0.97 at 277V AC	0.99 at 120V AC 0.97 at 277V AC
Efficiency (Typ.)	85%	83%	86%
AC Current (Max.)	1.8A at 110V AC	2.3A at 110V AC	3.4A at 110V AC
Short Circuit	Shut down o/p voltage; repower on to recover after fault condition is removed		
Over Loading	120%		
Operating Temp.	-40°C ~ +60°C		
Operating Humidity	20-90% RH, non-condensing		
Safety Standads	UL 8750		
Withstand Voltage	I/P-O/P: 1880V AC		
Isolation Rresistance	I/P-O/P: 100MΩ / 500V DC / +25°C / 70% RH		

## 24V DC TDWJ DRIVERS

Available in 24V DC output

### DESCRIPTION:

- Cooling by free air convection
- Suitable for LED lighting & moving sign applications
- Full protection aluminum housing for dry / damp locations
- Match with TRIAC, electronic low voltage, magnetic low voltage dimmers
- PWM (Pulse-width modulation) output, does not change the colour index
- Flicker-free, compatible with forward phase, reverse phase, TRIAC, MLV, ELV dimmers
- Works for 110-277V AC input, 120V & 277V dimmers, allows for flicker free dimming down to 1%



Model	OT-24150-TDWJ	OT-24200-TDWJ	OT-24300-TDWJ
Input Voltage	110-277V AC		
Output Voltage	24V DC		
Max. Wattage	150W	200W	300W
Amps	6.25A	8.33A	12.5A
Dimmable	Yes		
Frequency Range	47-63Hz		
Powe Factor	0.99 at 120V AC 0.94 at 277V AC	0.98 at 120V AC 0.95 at 277V AC	0.99 at 120V AC 0.97 at 277V AC
Efficiency (Typ.)	85%	86%	88%
AC Current (Max.)	1.8A at 110V AC	2.3A at 110V AC	3.4A at 110V AC
Short Circuit	Shut down o/p voltage; repower on to recover after fault condition is removed		
Over Loading	120%		
Operating Temp.	-40°C ~ +60°C		
Operating Humidity	20-90% RH, non-condensing		
Safety Standads	UL 8750		
Withstand Voltage	I/P-O/P: 1880V AC		
Isolation Rresistance	I/P-O/P: 100MΩ / 500V DC / +25°C / 70% RH		

# MISCELLANEOUS



## 1/2IN CONN

1/2" polymeric resin Loomex connector for connecting NMD90 Loomex cable

AVAILABLE FINISHES:



Grey

### DESCRIPTION:

- Terminale non-metallic sheathed cable
- Suitable for either dry location box or enclosure



Model	1/2IN CONN
Size	1/2" (13 mm)
Amount	100 pc / bag
Material	Polymeric resin

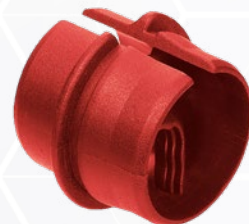
## 3/4IN CONN

Red 3/4" PVC (polymerizing vinyl chloride) connector

AVAILABLE FINISHES:



Red



Model	3/4IN CONN
Size	3/4" (19 mm)
Amount	50 pc / bag
Material	Polymeric Vinyl Chloride (PVC)

# MISCELLANEOUS

## CORDS

Extension cords for ORTECH slim / disc lights

CORDA - compatible with SLIM4CONT-3CCT, DISC4-3CCT, SLIM4-3CCT

CORDB - compatible with SLIM3GIM-5CCT, SLIM-RG3-5CCT, SLIM4GIM-5CCT, SLIM3CONT-3CCT, SLIM6-3CCT



Model	CORD24 A24 B24	CORD60	CORD120 A120 B120	CORD240
Length	24" (610 mm)	60" (1524 mm)	120" (3048 mm)	240" (6096 mm)

## JDZ001

Polymeric keyless lamp holder

AVAILABLE FINISHES:



White



### DESCRIPTION:

- For mounting on either 3-1/4" or 4" octagon outlet box



Model	JDZ001
Wattage	660W
Voltage	250V AC
No. of Terminal Screw	Two
Light Bulb	E19 medium base
Amount	40 / case

## JDZ003

Polymeric pull chain ceiling lamp holder

AVAILABLE FINISHES:



White



### DESCRIPTION:

- For mounting on either 3-1/4" or 4" octagon outlet box



Model	JDZ001
Wattage	660W
Voltage	250V AC
No. of Terminal Screw	Two
Light Bulb	E19 medium base
Amount	48 / case

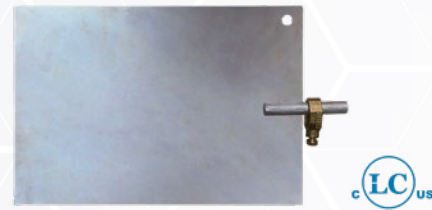


### PLATE GP

High quality steel ground plate for terminating bare copper wire

**DESCRIPTION:**

- Major time & cost savings vs. ground rods
- Made of steel, copper & wire gauge (conductor gauge 2/0) that fits



### SG01 / SG02

NMD90 staples for non-metallic sheathed cables in varying sizes

Model	SG01	SG02
Amount	1500 / bucket	500 / bucket
Applicable Cable(s)	12/2, 14/2	14/2, 12/2, 10/2, 12/3, 10/3



### SG03

NMD90 staples for non-metallic sheathed cables in varying sizes

Model	SG03
Amount	100 / case
Applicable Cable(s)	10/3, 8/2



### VB-S4 / VB-S6

Commercial / Residential grade vapour barriers for ORTECH LED lighting

**DESCRIPTION:**

- Reduces energy losses
- Prevents airflow between living spaces & unconditional areas
- Controls moisture in areas such as basements, ceilings, crawl spaces, floors, walls



Model	VB-S4	VB-S6
Application	4" LED lighting; most building codes OK	6" LED lighting; most building codes OK
Material	Heavy duty polyethylene	
Temperature Rating	+90°C	
Target	Installation with 16" or 14" beam centres	
Amount	50 / case standard packing	

## PLATES

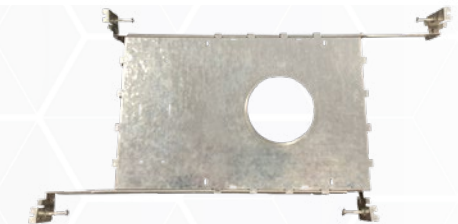


### PLATE2/3/4/6-HB

Galvanized steel mounting plates with hanger bars for ORTECH LED lights

**DESCRIPTION:**

- Hanger bar install in longer side
- Applicable for slim light with curved lip



Model	PLATE2-HB	PLATE3-HB PLATE3A-HB	PLATE4-HB PLATE4A-HB	PLATE6-HB
Hole Size	Ø 2-5/8"	Ø 3-1/8"	Ø 4-3/16"	Ø 6-3/16"
Material	Galvanized steel			
Hanger Bar Installation Type	Four way			
Applicable LED Light Size	2"	3"	4"	6"

### PLATE26-2/3/4/6

New construction plates made up of galvanized steel for recessed lighting

**DESCRIPTION:**

- Includes holes for easy installation
- Compatible with ORTECH slim lights, **PLATE26-3A** is compatible with SLIM-RG3-5CCT & SLIM-RG4-5CCT, **PLATE26-4A** is compatible with SLIM4FR-5CCT & SLIM4FL+FR-5CCT



Model	PLATE26-2	PLATE26-3 PLATE26-3A	PLATE26-4 PLATE26-4A	PLATE26-6
Hole Size	Ø 2-5/8"	Ø 2-15/16"	Ø 4-1/8"	Ø 6-1/4"
Material	Galvanized steel			
Applicable LED Light Size	2"	3"	4"	6"

**8800-CL**

Polymeric keyless lamp holder

AVAILABLE FINISHES:



Black



**DESCRIPTION:**

- High impact polycarbonate
- One gang weather proof cover & base
- Can be used outdoors / in other wet location
- Impact resistant, UV stabilized, non-conductive

Model	<b>8800-CL</b>
Material	Weatherproof cover & base Decora style receptacle plate Gasket with slits for mounting screws Baggie assembly with mounting hardware
Application	Single gang
Qualification	Meets extra duty requirements for any application

**PLATE 11C10**

One gang GFCI utility metal box cover plate



**DESCRIPTION:**

- 4" x 2-1/2"
- Made of galvanized steel



**PLATE 72C1**

4-11/16" square cover



**DESCRIPTION:**

- 4-11/16" x 4-11/16"
- Made of galvanized steel



**PLATE 72-C6 (FORMERLY LD-5K)**

4-11/16" square 1/2" knock out cover for boxes



**DESCRIPTION:**

- 4-11/16" x 4-11/16"
- 4-11/16" square cover 1/2" KO



**PLATE 99PP**

Protector plate for wood studs



**DESCRIPTION:**

- 1-1/2" x 5"
- Made of galvanized steel



**PLATE 52-C6 (FORMERLY LD-4K)**

4" Square 1/2" knock out cover for boxes



**DESCRIPTION:**

- 4" x 4"
- Square flat steel cover



**PLATE 52C13**

4" one gang square device cover



**DESCRIPTION:**

- 4" x 4" x 1/2"
- Square 1/2" raised one gang device ring



**PLATE 52C17**

4" two gang square device cover



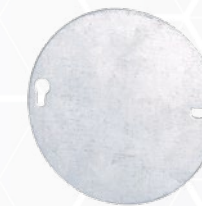
**DESCRIPTION:**

- 4" x 4" x 1/2"
- 1/2" raised device cover



**PLATE 54-C1 (FORMERLY LD-2)**

4" flat round blank cover for octagon boxes



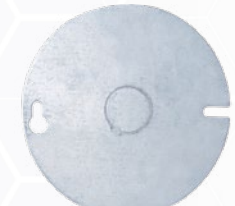
**DESCRIPTION:**

- 4" x 4"
- Made of galvanized steel



**PLATE 54-C6 (FORMERLY LD-1K)**

4" round knock out cover for octagon boxes



**DESCRIPTION:**

- 4" x 4"
- Flat round cover with 1/2" KO



**PLATE 54C6-WH**

4" white round cover with centre knockout



**DESCRIPTION:**

- 4" x 4"
- Made of galvanized steel



**PLATE 66PP**

Cable protection plate for wood stud



**DESCRIPTION:**

- 1-3/8" x 3"
- Made of galvanized steel





# RECESSED LIGHTING

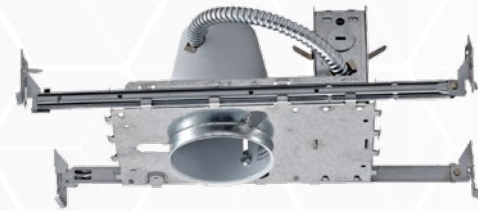


## ODH2-3

Commercial grade GU10 base 3" line voltage recessed housing

- Wire through junction box
- Adjustable hanger bar from 14" to 24"
- Thermally protected with shut off sensor
- New construction & rated for damp locations
- Includes cover to protect exposed cone from paint
- Minimum 3" space between housing and insulation

Model	ODH2-3
Lamp Type	GU10 base 50W Max.
Input Voltage	120V AC
Output Voltage	120V AC
Mounting	Four-sided
Application	Commercial
Included	Detachable socket / Push-in connectors / Cover to protect exposed cone from paint



3" HOUSING



# RECESSED LIGHTING

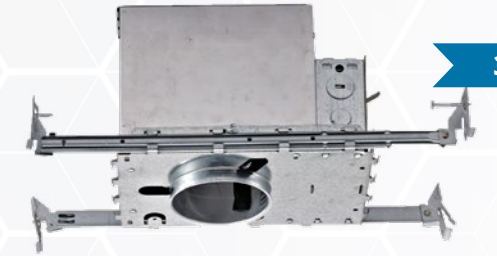
## ODH2-3IA

Commercial grade GU10 base 3" line voltage air tight recessed housing

### DESCRIPTION:

- Wire through junction box
- Adjustable hanger bar from 14" to 24"
- Thermally protected with shut off sensor
- 3" line voltage insulated
- New construction & rated for damp locations
- Meets state of WA energy code ASTM E283 for air tight

Model	ODH2-3IA
Lamp Type	GU10 base 50W Max.
Input Voltage	120V AC
Output Voltage	120V AC
Mounting	Four-sided
Application	Commercial
Included	Push-in connectors / Cover to protect exposed cone from paint



3" HOUSING

## ODH1-4IAG

4" GU10 35W Max. thermally protected air tight housing

### DESCRIPTION:

- Thermally protected
- Wire through junction box
- Adjustable hanger bar from 14" to 24"
- New construction
- Meets state of WA energy code ASTM E283 for air tight
- For residential applications & direct contact with insulation

Model	ODH1-4IAG
Lamp Type	PAR20 35W Max.
Input Voltage	120V AC
Output Voltage	120V AC
Mounting	Four-sided
Application	Residential
Included	Socket / Push-in connectors



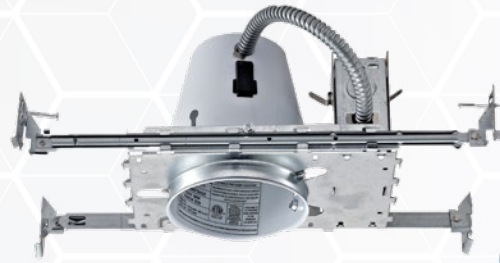
4" HOUSING



## RECESSED LIGHTING

### ODH2-4IA2

4" E26 BASE R30/PAR20 50W Max. line voltage air tight recessed housing



4" HOUSING

#### DESCRIPTION:

- Wire through junction box
- Adjustable hanger bar from 14" to 24"
- Thermally protected with shut off sensor
- For direct contact with insulation
- New construction & rated for damp locations
- Meets state of WA energy code ASTM E283 for air tight



Model	ODH2-4IA2
Lamp Type	R30 50W Max. / PAR20 50W Max.
Input Voltage	120V AC
Output Voltage	120V AC
Mounting	Four-sided
Application	Commercial
Included	Detachable socket / Push-in connectors / Cover to protect exposed cone from paint

### ODH1-4RSICATG

4" GU10 35W Max. thermally protected air tight retrofit design housing



4" HOUSING

#### DESCRIPTION:

- Wire through junction box
- Air tight & for screw down clamps
- Commercial applications
- Suitable for direct contact with insulation



Model	ODH1-4RSICATG
Lamp Type	GU10 PAR16 35W Max.
Diameter	4-1/2" (cut hole size)
Lamp Size	PAR16
Included	Screw down clamps / four holes quick connector

### ODH2-4R

4" R/PAR20 50W Max. line voltage housing with quick connect push-in terminals



4" HOUSING

#### DESCRIPTION:

- Wire through junction box
- Commercial remodel housing
- Suitable for dry locations
- Includes screw down clamps



Model	ODH2-4R
Lamp Type	E26 PAR20 50W Max.
Diameter	4-1/2" (cut hole size)
Lamp Size	PAR20
Included	Screw down clamps / four holes quick connector

## RECESSED LIGHTING

### ODH2-4RS

4" PAR20 35W Max. remodel air tight housing for insulated ceilings



4" HOUSING

#### DESCRIPTION:

- Wire through junction box
- Retrofit design with screw down clamps
- Thermally protected
- Suitable for damp locations

Model	ODH2-4RS
Lamp Type	PAR20 120V 35W Max.
Diameter	4-1/2" (cut hole size)
Lamp Size	PAR20
Included	Screw down clamps / Adjustable socket bracket

### ODT2-351

Round 3" GU10 35W recessed light trim mounted with 3 spring clips



3" TRIMS

#### Trim Options (sold separately)

				
<b>ODT2-351WH</b> White trim White baffle	<b>ODT2-351HZ</b> White trim Haze ring	<b>ODT2-351ORB</b> Oil Rubbed Bronze	<b>ODT2-351RBK</b> Black trim Black baffle	<b>ODT2-351BK</b> Black baffle White ring

### ODT2-352G

3" GU10 35W Max. gimbal recessed light trim mounted with 3 spring clips



3" TRIMS

AVAILABLE FINISHES:



White



Black



## RECESSED LIGHTING

### ODT2-352 SG WH

Round 3" GU10 35W Max. recessed light trim for shower room

#### DESCRIPTION:

- Easy installation
- With frosted glass for bathroom use
- White powder coating finish for rustproof effect



3" TRIMS

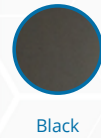
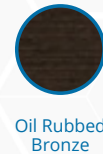
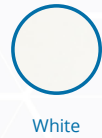


Model	ODT2-352 SG WH
Application	Shower room
Material	Metal & Glass
Mounting	Suitable for all the 3" recessed can
Lamp Loading	From the back
Lamp Type	GU10 35W Max.

### ODT1-451

Round 4" MR16 50W Max. voltage trim with various colour options

#### AVAILABLE FINISHES:



4" TRIMS

### ODT1-452

Round 4" MR16 50W Max. reflector available in various colours

Trim Options (sold separately)				
ODT1-452HZ Haze reflector	ODT1-452SNCL Satin Nickel ring Clear reflector	ODT1-452CL Clear reflector	ODT1-452SN-ABK Satin Nickel ring Black Alzak reflector	ODT1-452ABK Black Alzak reflector

### ODT1-452G

Round 4" MR16 50W Max. voltage gimbal light trim



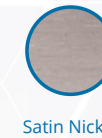
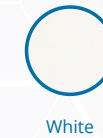
4" TRIMS

## RECESSED LIGHTING

### ODT2-452G

Round 4" gimbal PAR20 50W Max. voltage recessed light trim

#### AVAILABLE FINISHES:



4" TRIMS

### ODT2-451

4" PAR20 50W Max. recessed light trim mounted with 3 spring clips

#### Trim Options (sold separately)



ODT2-451WH  
White trim  
White baffle



ODT2-451BK  
Black baffle  
White Ring



ODT2-451RBK  
Black trim  
Black baffle



4" TRIMS

### ODT2-452

4" R/PAR20 50W Max. recessed light trims with 3 spring clips

#### DESCRIPTION:

- To be used in low and line voltage application
- Painted finish is powder coated for abrasion resistance
- Electroplated finish are anodized for abrasion resistance, clear lens included

#### Trim Options (sold separately)



ODT2-452HZ  
White trim  
Haze reflector



ODT2-452CL  
White trim  
Clear Alzak reflector



ODT2-452CHCL  
Chrome trim  
Clear alzak reflector



ODT2-452ABK  
White trim  
Black Alzak reflector



4" TRIMS

### ODT2-453CG-SN

5" PAR20 35W Max. watertight satin nickel trim with ball lens

#### AVAILABLE FINISHES:



### ODT2-453SG

PAR20 35W Max. recessed light shower gimbal trim

#### AVAILABLE FINISHES:



4" TRIMS

# WIRING DEVICES



## 8304TR

15A decorative tamper resistant receptacle with self grounding clip

AVAILABLE FINISHES:



White



Model	8304TR
Voltage	125V AC
Amps	15A
Base / Cover	Polycarbonate
Power Contacts	Brass
Terminal Screws	Plated steel
Frame	Polycarbonate
Flammability	UL 94V-2
Operating Temp.	-40°C ~ +65°C

# WIRING DEVICES

## 8304USB

15A dual USB charger with 15A duplex that charges without adapter

AVAILABLE FINISHES:



White



### DESCRIPTION:

- 2 USB charging ports with total power of 4A
- Charge electrical device directly without adapter
- Tamper resistant (TR) receptacles increase safety

Model	8304USB
Voltage	125V AC
Amps	15A
Base / Cover	Polycarbonate
Power Contacts	Brass & Silver
Terminal Screws	Plated steel
Frame	Plated steel
Flammability	UL 498
Operating Temp.	+20°C ~ +60°C

## 8307TR

20A decorative tamper resistant "T" slot receptacle

AVAILABLE FINISHES:



White



Model	8307TR
Voltage	125V AC
Amps	20A
Base / Cover	Polycarbonate
Power Contacts	Brass
Terminal Screws	Plated steel
Frame	Polycarbonate
Flammability	UL 94V-2
Operating Temp.	-40°C ~ +65°C



### 8307USB

20A decorative tamper resistant receptacle with dual USB charger

AVAILABLE FINISHES:



#### DESCRIPTION:

- Total power 4A two USB charging ports
- Tamper resistant receptacles — increase safety
- Allows user to charge electrical device directly without an adapter

Model	8307USB
Voltage	125V AC
Amps	20A
Base / Cover	Polycarbonate
Power Contacts	Brass & Silver
Terminal Screws	Plated steel
Frame	Plated steel
Flammability	UL 498
Operating Temp.	+20°C ~ +60°C

### 8330T

30A dryer receptacle suitable for aluminum and copper wires

AVAILABLE FINISHES:



Model	8330T
Max. Voltage	125V AC
Amps	30A
Base / Cover	Polycarbonate
Power Contacts	Brass
Terminal Screws	Plated steel
Frame	Polycarbonate
Flammability	UL 94V-2
Operating Temp.	-40°C ~ +65°C

### 8350T

50A range receptacle suitable for aluminum and copper wires

AVAILABLE FINISHES:



Model	8350T
Max. Voltage	125V AC
Amps	50A
Base / Cover	Polycarbonate
Power Contacts	Brass
Terminal Screws	Plated steel
Frame	Polycarbonate
Flammability	UL 94V-2
Operating Temp.	-40°C ~ +65°C

### MH15-ST | MH20-ST

15A and 20A self-testing tamper resistant GFCI receptacle with wall plate

AVAILABLE FINISHES:



White



#### DESCRIPTION:

- Impact-resistant thermopolymeric cover and body
- Provides protection with periodic automatic testing
- Further durability against electrical noise & moisture corrosion

Model	MH15-ST   MH20-ST
Wattage	1800W   2400W
Voltage	120V AC
Frequency	60Hz
Trip Level	4-6mA
Trip Time	25ms
Reaction Area	-35°C ~ +66°C
Humidity	95% RH, non-condensing
Operating Temp.	-35°C ~ +66°C

**DMD-ELV**

Electronic low voltage dimmer switch with single pole three way wiring

**DESCRIPTION:**

- Decorative dimmer
- Wall plate sold separately
- Standard single pole & 3 way wiring for easy installation at home



Model	DMD-ELV
Wattage	300W
Voltage	120V AC
Frequency	60Hz
LED/CFL	150W dimmable
Humidity	95% RH, non-condensing
Operating Temp.	0°C ~ +55°C

**DMD-LED-3**

LED/CFL 150W dimmable single pole three way decorative dimmer switch

**DESCRIPTION:**

- 0-10V low voltage lighting control
- Minimum light level (low-end) shall be adjusted to optimize performance
- Provides dimming control for 0-10V compatible LED drivers, fluorescent ballast & HID ballast



Model	DMD-LED-3
Voltage	0-10V AC
Ballast / LED	120V AC at 6A / 277V AC at 3A
Frequency	60Hz
LED/CFL	150W dimmable
Incandescent	600W
Humidity	95% RH, non-condensing
Operating Temp.	0°C ~ +55°C

**HET01-R**

15A programmable 7 day digital timer with daylight saving feature

**DESCRIPTION:**

- Large digital LCD display
- Both automatic/manual operations possible
- Built-in memory holds settings indefinitely without power



Model	HET01-R
Output	120V AC
Frequency	60Hz
Tungsten Rating	1200W
Resistive Rating	1800W 15A
Motor load	1/4 HP
Operating Temp.	0°C ~ +55°C

**HET06-R**

Commercial grade preset in-wall countdown single pole timer

**DESCRIPTION:**

- Works with most common lighting types
- Replaces standard lights / fan single pole switches
- Ideal for closet, pantry, garage, laundry room, outdoor lighting and spa



Model	HET06-R
Voltage	125V AC
Resistive	15A
Ballast	1200VA
Tungsten	1000W
Ballast/LED	5A or 600W
Motor	1/2 HP
Time Delay	5 min / 10 min / 30 min / 60 min / 2 or 4 hours
Rating	Commercial indoor use only
Humidity	95% RH, non-condensing
Operating Temp.	0°C ~ +55°C



**MPC-50V**

10A line voltage PIR ceiling mount sensor for controlling incandescent, CFL and LED lighting

**DESCRIPTION:**

- Simple and fast installation
- Multi level, 360° fresh lens for superior occupancy detection
- Energy efficient, super bright LED with adjustable time delay



Model	MPC-50V
Wattage	800W
Input	120-277V AC 60Hz
Incandescent	120V AC 60Hz at 800W
Ballast	120V AC at 800VA / 277V AC at 1600VA
Resistive	10A at 120V AC
Motor	1/4 HP at 120V AC
Adjustable Light Level	10FC to 150FC
Adjustable Time Delay	15 sec ~ 30 min
Coverage	360° up to 1200 ft²
Operating Temp.	0°C ~ +55°C

**DWOS**

12A passive infrared sensor with ambient light level sensor

**DESCRIPTION:**

- Has one relay equal to single pole switch
- After no motion is detected for the set time delay, the load turns off automatically
- Detects difference between heat emitted from human body in motion & background space



Model	DWOS
Capacity Level	120V AC 60Hz
Tungsten	800W
Ballast	800VA
Resistive	12A
Motor	1/4 HP
Time Delay	15 sec ~ 30 min
Light Level	30 Lux — Daylight
Operating Temp.	0°C ~ +55°C

**WM-DHOS**

Single pole humidity / PIR motion sensor with interchangeable face cover

**DESCRIPTION:**

- Wall plate sold separately
- Easily replaces existing standard switch
- Compatible with incandescent, fluorescent, halogen and LED lighting



Model	WM-DHOS
Voltage	120V AC
Frequency	60Hz
Motor	1/4 HP
Time Delay	15 sec ~ 5-15-30 mins
Field of View	180°
Coverage	600 ft²
Humidity	45-80% relative humidity
Operating Temp.	0°C ~ +30°C



### OD-MC609V RC D

120-347V AC waterproof indoor use sensor for vapour tight, high bays and LED panels

#### DESCRIPTION:

- Easy to adjust sensor parameters
- Functions with remote controller MH01
- Works with 1-10V dimmable LED driver



Model	OD-MC609V RC D
Wattage	0.5W Max. (transmitting power) < 1.5W (stand-by power)
DC Input Voltage	N/A
Rated Voltage	120V AC / 277V AC / 347V AC at 50/60Hz
Working Mode Output	ON/OFF function, 1-10V step dimming
Dim Interface	< 50mA (non-constant source) 10% (1.4-1.6V) / 20% (1.9-2.1V) / 30% (2.9-3.1V) / 50% (4.9-5.1V)
Operating Frequency	5.8 GHz ± 75 MHz, ISM band
Lifetime	50000 hours
Grade of Protection	IP 65
Protection Class	Class II
Environment Requirement	Compliant to RoHS
Wiring	Input STW, 3*18AWG exposed line length: 810-830 mm 1-10V DC: STJW, 2*18AWG exposed line length: 810-830 mm
Detection Angle	150° (wall mounting) 360° (ceiling mounting)
Hold Time	DIP switch: 5-30s / 1-3-20-30 mins Remote Control: 5-30s / 1-3-5-10-20-30 mins
Stand-by Dim Level	DIP switch & Remote control: 10% / 20% / 30% / 50%
Standby-Period	DIP switch: 0s / 1-3-10-30 mins + ∞
Detection Area	DIP switch: 100% / 50% Remote control: 25% / 50% / 75% / 100%
Daylight Sensor	DIP Switch & Remote control: 5-15-30-50-100-150 lux / Disable (ambient light diffusion)
Detection Radius	5-8m (mounting height 8m, maximum mounting height 15m)
Operating Temp.	-35°C ~ +55°C

### OD-MC628VRC

LED high bay sensor that supports high and low sensitivity modes

#### DESCRIPTION:


- Compatible with 0-10V dimmable LED dimmers
- For metal ceilings, metal reflector mounting environments



#### DAYLIGHT SENSOR:

- 100 & 200 lux / 150 & 300 lux
- Daylight priority: (5-15-30-50 lux) / 150 lux
- Daylight threshold: 5-15-30-50-100-150 lux / Disable (no shadow or ambient light diffuse reflection)

Model	OD-MC628VRC
Wattage	0.5W Max. (transmitting power) < 1W (stand-by power)
DC Input Voltage	N/A
Rated Voltage	120-277V AC
Working Mode Output	0-10V dimming
Dim Interface	0-10V dimming, < 50mA (non-constant source)
Operating Frequency	5.8 GHz ± 75 MHz, ISM band
Lifetime	50000 hours
Grade of Protection	IP 65
Protection Class	Class II
Environment Requirement	Compliant to RoHS
Wiring	UL1015, 2*18AWG exposed line length: 810 mm UL1015, 2*22AWG exposed line length 810 mm
Detection Angle	150° (wall mounting) 360° (ceiling mounting)
Hold Time	5-30s / 1-3-5-10-20-30 mins
Stand-by Period	0-10s / 1-3-5-10-20-30 mins + ∞
Detection Area	25% / 50% / 75% / 100%
Detection Radius	2-12m (mounting height 12m max.)
Operating Temp.	-35°C ~ +55°C

Compatible Remote Control (sold separately)	
	REMOTE-MH10





At **Ortech Industries Inc.** you can find solutions to all your lighting, electrical & HVAC needs. From our humble beginnings in 2004, when we were just a small supplier specializing in a few select markets; we have now cemented ourselves as industry leaders across North America. Through efficient use of our network in Hong Kong and China, we have delivered a wide range of innovative and economical lighting, electrical & HVAC products.

Ortech is an industry leader in **LED lighting, LED fireplaces and ventilation fans.** We also offer items like electrical boxes and metal plates, making us your electricians favourite one-stop shop. All our products are certified by the necessary American and Canadian standards, and are primarily distributed through lighting showrooms, electrical wholesalers and HVAC distributors.

ORTECH reserves the right to modify at any time, without notice, any or all of our product's features, designs, components and specifications.

Ortech products are distributed in North America by **Crown Distributors Ltd.**









13376 Comber Way, Surrey, BC V3W 5V9  
205 Summerlea Rd, Brampton, ON L6T 4E5

1-888-543-6473  
info@ortechindustries.com