

Floor Metal Box

MODEL FB-SD4400SN



WARNING

WARNING — THE INSTALLATION MUST BE CARRIED OUT BY A QUALIFIED ELECTRICIAN.

1. Use copper wires ONLY
2. DO NOT exceed electrical rating of receptacle
3. 12-10 AWG standard or solid copper wire is preferred

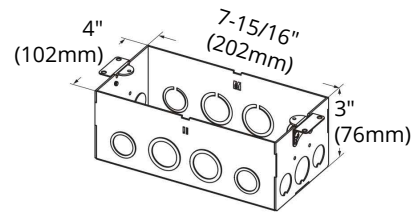
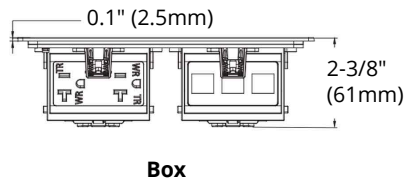
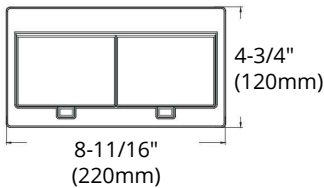
CAUTION

PLEASE READ INSTRUCTION BEFORE COMMENCING INSTALLATION AND RETAIN FOR FUTURE REFERENCES.

Electrical products can cause death or injury, or damage to property.

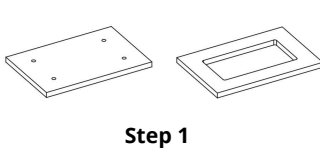
If in any doubt about the installation or use of this product, consult a competent electrician.

CONTENTS

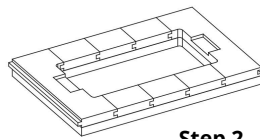


#6-32 Screws

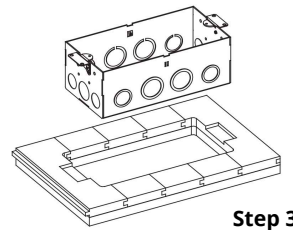
INSTALLATION



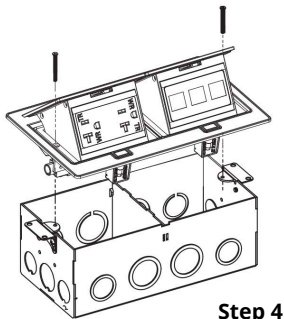
Step 1



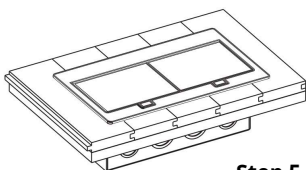
Step 2



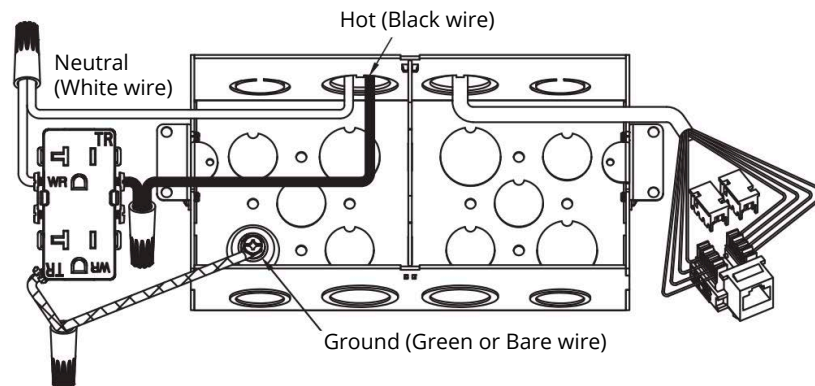
Step 3



Step 4



Step 5



- 1) Use the cutout paper to cut a space for the box to install in
- 2) Cut the box shape without the ears completely through the sub-floor. Cut 3/8" depth into the sub-floor for the mounting ears
- 3) Remove knockouts and secure the box onto the floor. Pull the wire through the opening of the floors and knockouts and connect wires based on the wiring diagram
- 4) Assemble the receptacle part above the box
- 5) Installation complete

ORTECH reserves the right to modify at any time, without notice, any or all of our product's features, designs, components and specifications to meet market changes.