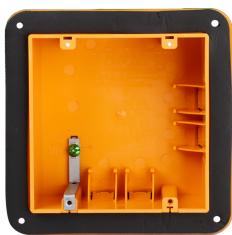


Non-Metallic Box

MODEL WPB06



WARNING

WARNING — THE INSTALLATION MUST BE CARRIED OUT BY A QUALIFIED ELECTRICIAN.

1. Non-metallic boxes can only be installed by a qualified electrician
2. Please read this instruction manual first before installation

CAUTION

PLEASE READ INSTRUCTION BEFORE COMMENCING INSTALLATION AND RETAIN FOR FUTURE REFERENCES.

Electrical products can cause death or injury, or damage to property.

If in any doubt about the installation or use of this product, consult a competent electrician.

INSTALLATION GUIDE

1. There are ears with nail holes on the product.
Nail the box on the wooden wall.
2. In box internal, there are 4 wiring holes on the GREEN grounding screws.
After threading wires, the spring sheet structure of the product will clamp the wires automatically.

ORTECH reserves the right to modify at any time, without notice, any or all of our product's features, designs, components and specifications to meet market changes.