



## WARNING

**WARNING — THE INSTALLATION MUST BE CARRIED OUT BY A QUALIFIED ELECTRICIAN.**

1. LED Traditional Wall Packs are suitable for using in wet, dry, and damp locations
2. Please keep the LED Traditional Wall Packs away from any corrosive substance, and please use dry or damp cloth when you clean it
3. LED Traditional Wall Packs can only be installed by a qualified electrician
4. Before installation or maintenance, please disconnect the power to prevent electric shock

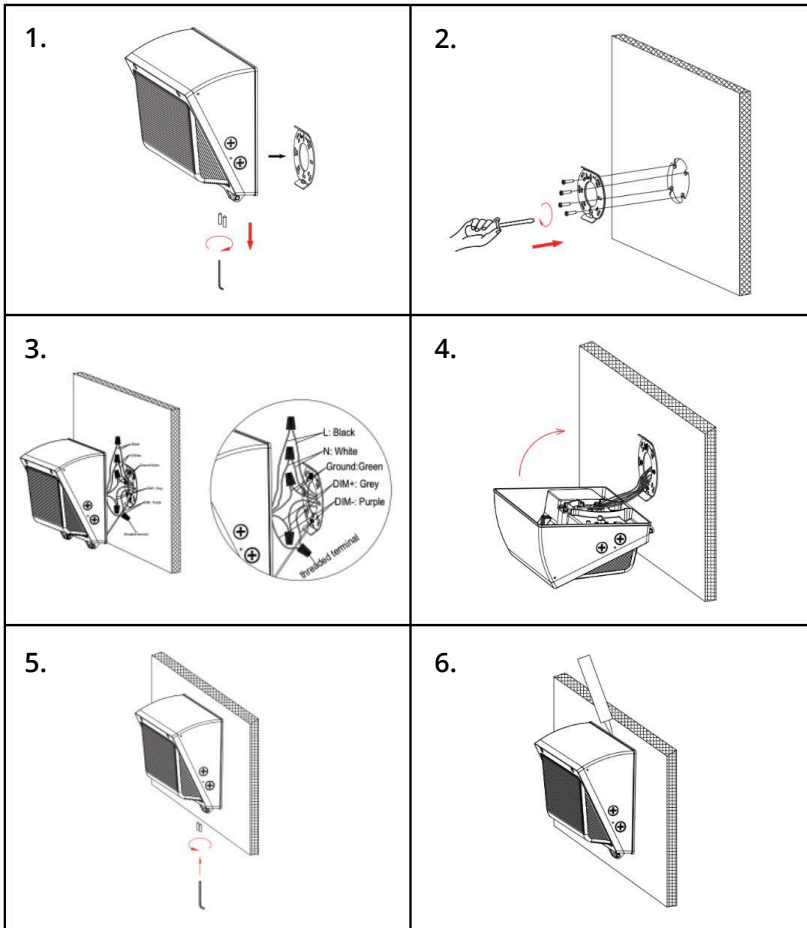
## Application Notice

1. Do not exceed using the standard working voltage: 100-347V AC, 50/60Hz
2. Be sure the power supply is turned off before installation
3. Switch off power of the mains supply or the connection lead respectively before doing any works
4. Please note waterproof, dustproof, electricity prevention and shockproof for the external power wires
5. Be sure the connection between the wires is in good condition when installing the lamps, beware of leakage

## CAUTION

**PLEASE READ INSTRUCTION BEFORE COMMENCING INSTALLATION AND RETAIN FOR FUTURE REFERENCES.**  
**Electrical products can cause death or injury, or damage to property.**  
**If in any doubt about the installation or use of this product, consult a competent electrician.**

## INSTALLATION GUIDE



1. Get the screw on the fixture loosened by using the hexagon wrench, don't make it off from the fixture completely; then take off the mounting plate on the fixture (see image 1 on the left diagram)
2. Pass the AC cables through the large center hole on the mounting plate. Connect the holes on the mounting plate to the holes in the terminal block. Depending on the size of the holes in the junction box, use two #8 screws to attach the mounting plate to the junction box and use the leveling bubbles in the mounting plate to adjust the horizontal mounting plate (see image 2)
3. Hang the wire rope onto the mounting plate, then use the threaded terminal to connect L/N/Ground wire, dim+/dim- (If not, please ignore) separately, and then plug the threaded terminals into the embedded junction box (see image 3)
4. Hang the lamp on the mounting plate (see image 4)
5. Tighten the screws on the fixing device with a hexagon wrench (see image 5)
6. Fill the top and sides of the lamp with waterproof silicone (see image 6)