

## LED WALL PACKS

### M-WP25-3CCT+W

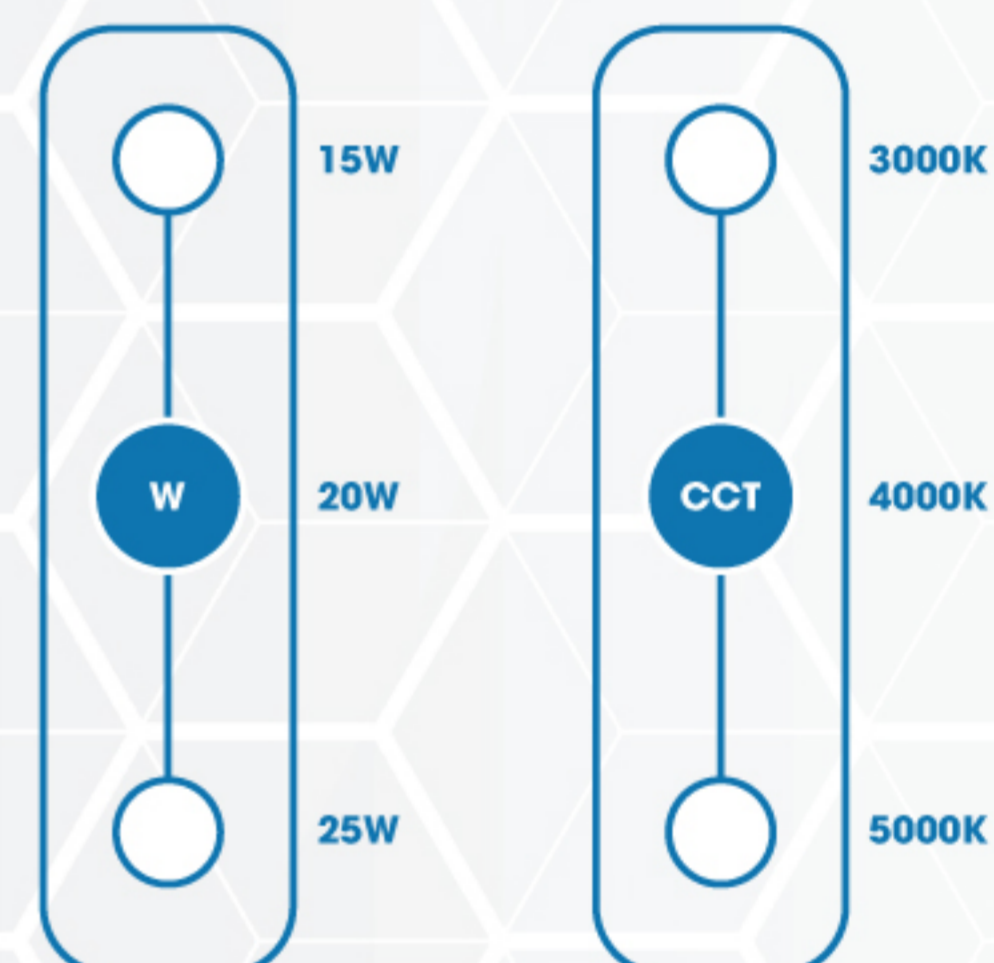
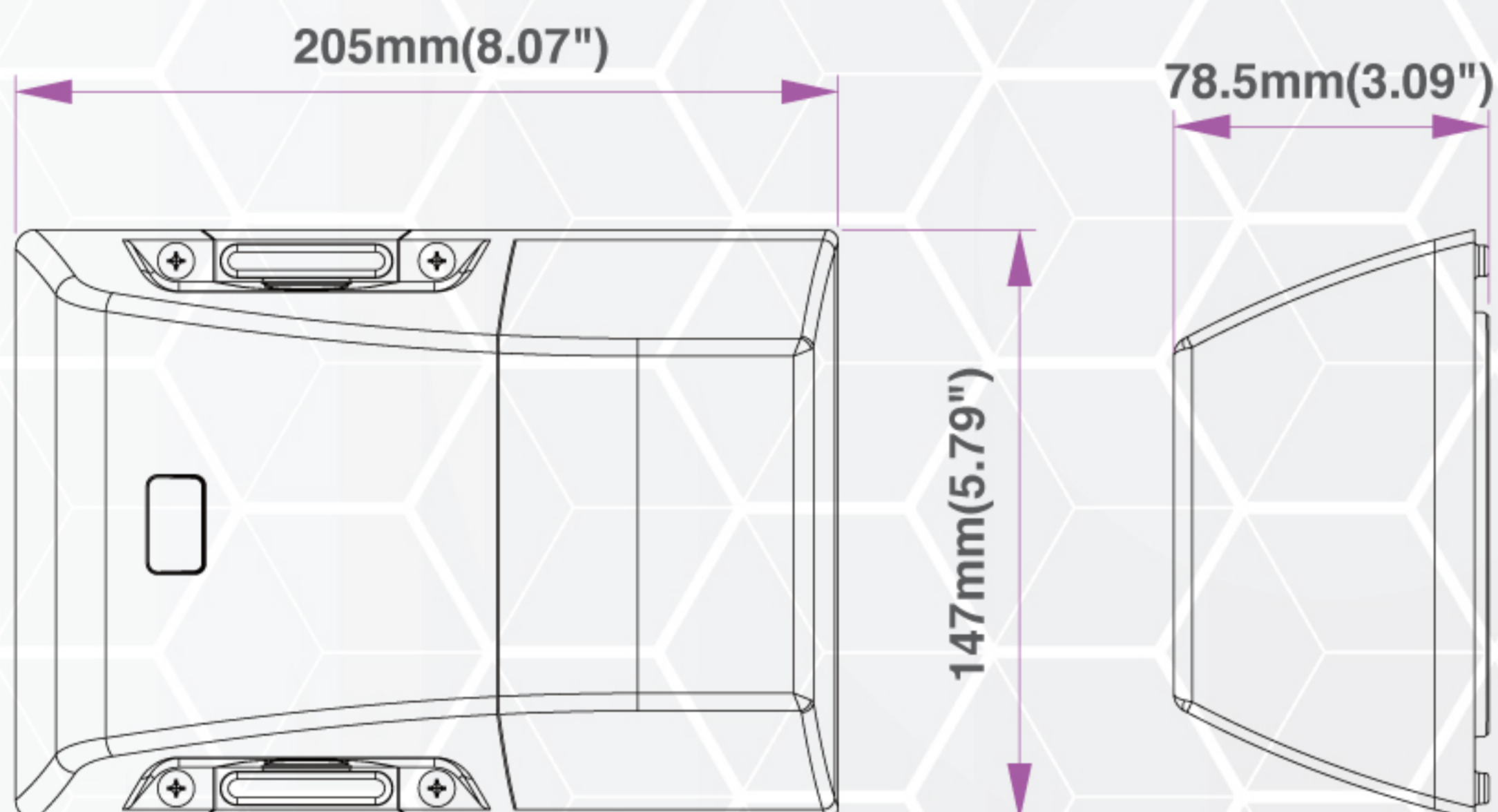
## HIGHLIGHTS

### LED Mini Wall Pack with Integrated Photocell Sensor

- Easy installation, with surface mounted kit (included in packaging)
- Compact structure which can save on shipping and store costs
- Die-cast aluminum cooling design
- Excellent optics design, greatly improve the light utilization & uniformity
- Internal photocell design which can automatically turn on at dusk and turn off at dawn, saving energy
- CCT and Wattage selectable



## DIMENSIONS



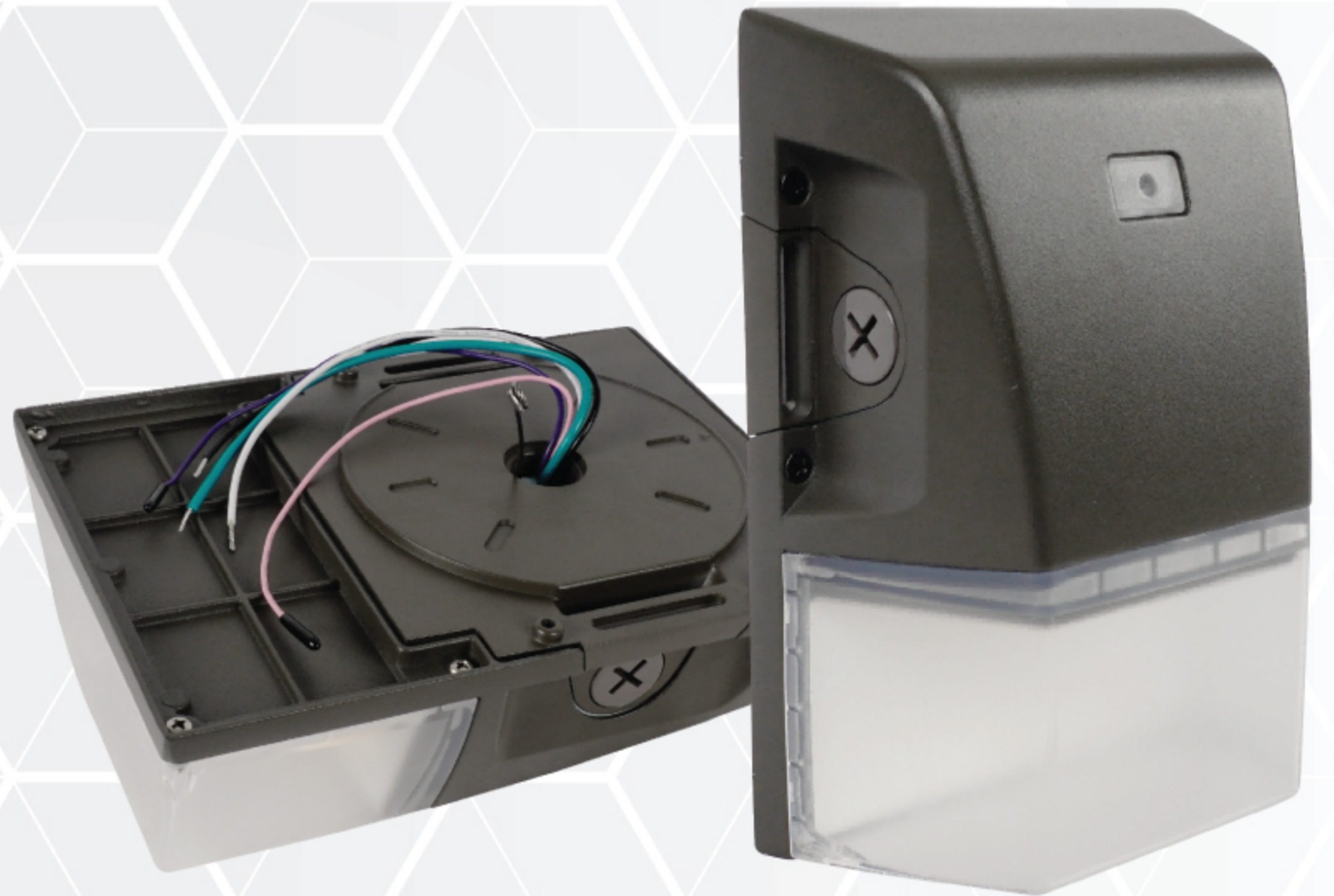
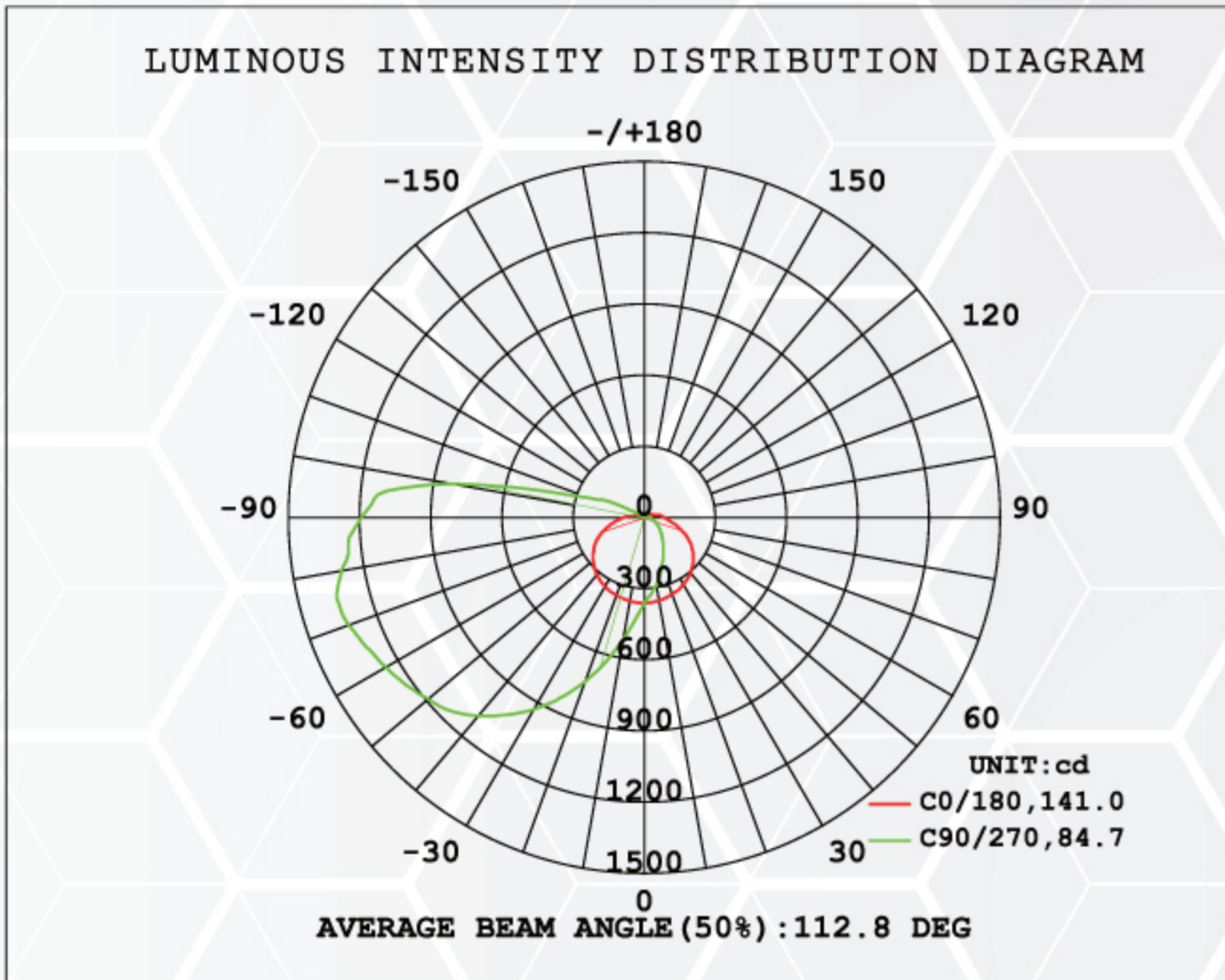
## SPECIFICATIONS

Model	M-WP25-3CCT+W
Wattage	15W   20W   25W
Voltage	AC100-277V
Lumens	>125lm/W
Beam Angle	90° x 140°
Lifetime	50000 hours
Dimmable	Yes(only 0-10v dimming available)
Rating	Wet locations
CRI	>80
Rate Current	0.28A
Colour Temp.	3000K / 4000K / 5000K
Materials   Mounting	ADC12   Bracket fixed
Operating Temp.	-40°C ~ +45°C

## LED WALL PACKS

M-WP25-3CCT+W

## TESTING REPORT



## APPLICATION



Reference	QTY.	Remarks	Project:
			Location:
			Architect:
			Engineer:
			Contractor:
			Submitted by:
			Date:

ORTECH reserves the right to modify at any time, without notice, any or all of our product's features, designs, components and specifications to meet market changes.