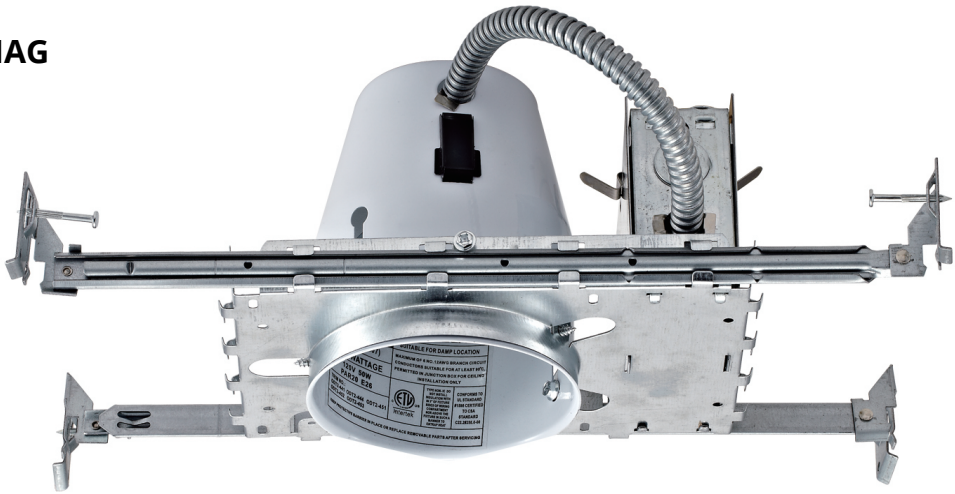


4" Recessed Housing



Product Specification Sheet

MODEL ODH1-4IAG



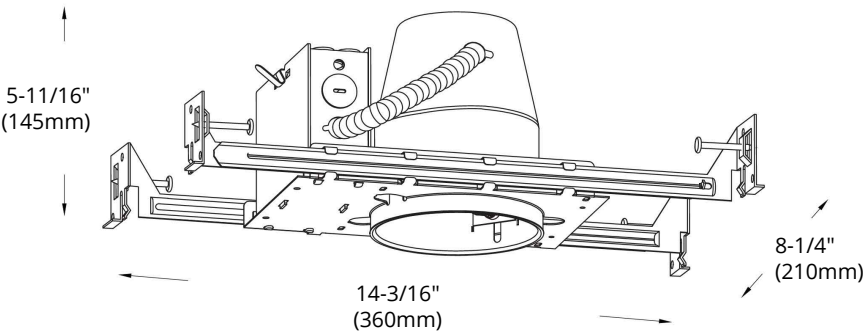
HIGHLIGHTS

- Thermally protected and is rated for damp locations
- Meets State of WA energy code ASTM E283 for Air Tight
- Wire through junction box and adjustable hangar bar from 14"-24"
- Residential grade new construction 4" GU10 35W Max. recessed Air-Tight housing

SPECIFICATIONS

Model	ODH1-4IAG
Lamp Type	GU10 35W Max.
Input/output Voltage	120V AC
Mounting	Four-sided
Application	Residential
Included	Socket / Push-in connectors

DIMENSIONS



Reference	QTY.	Remarks	Project:
			Location:
			Architect:
			Engineer:
			Contractor:
			Submitted by:
			Date:

ORTECH reserves the right to modify at any time, without notice, any or all of our product's features, designs, components and specifications to meet market changes.