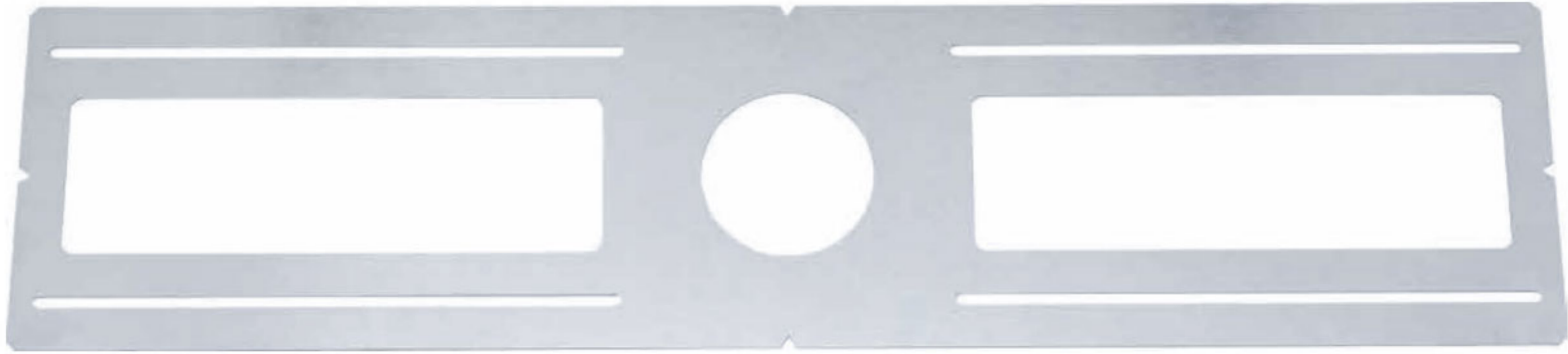


## MODEL PLATE26-4A



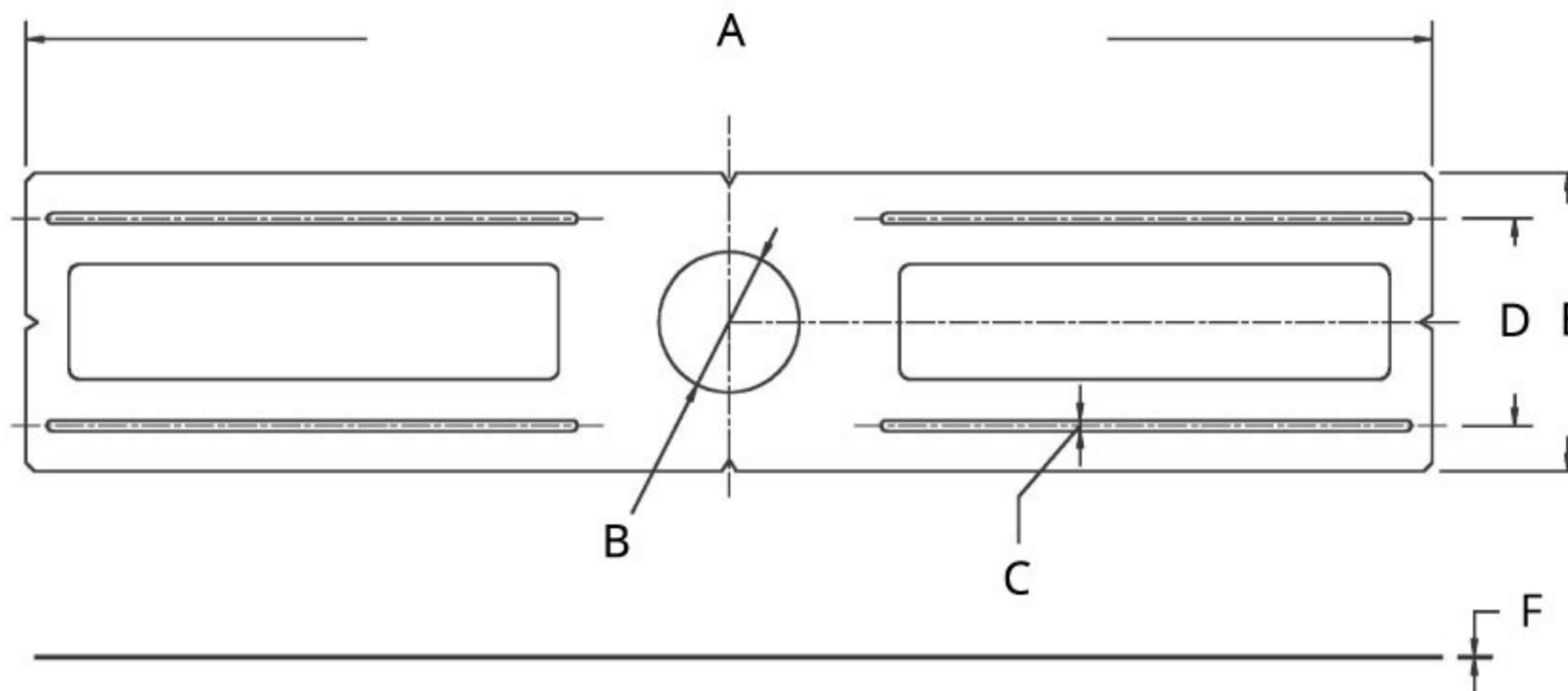
### HIGHLIGHTS

- New Construction Plates made up of galvanized steel for recessed lighting
- Compatible with **SLIM4(FR)-5CCT & SLIM4FL+FR-5CCT**
- Includes holes for easy installation

### SPECIFICATIONS

Model	PLATE26-2	PLATE26-3	PLATE26-3A	PLATE26-4	PLATE26-4A	PLATE26-6
Hole Size	Ø 2-19/32" (66mm)	Ø 2-61/64" (75mm)	Ø 3-15/32" (88mm)	Ø 4-9/64" (105mm)	Ø 4-1/4" (108mm)	Ø 6-17/64" (159mm)
Material	Galvanized Steel					
Compatible Lights	ORTECH 2" Slim Lights	ORTECH 3" Slim Lights	SLIM-RG3 & SLIM-RG4	ORTECH 4" Slim Lights	SLIM4(FR)-5CCT & SLIM4FL+FR-5CCT	ORTECH 6" Slim Lights

### DIMENSIONS



Model	PLATE26-2	PLATE26-3	PLATE26-3A	PLATE26-4	PLATE26-4A	PLATE26-6
A	25-63/64" (660mm)					
B	Ø 2-19/32" (66mm)	Ø 2-61/64" (75mm)	Ø 3-15/32" (88mm)	Ø 4-9/64" (105mm)	Ø 4-1/4" (108mm)	Ø 6-17/64" (159mm)
C	13/64" (5mm)					
D	Ø 3-13/16" (97mm)	Ø 4-1/2" (114.2mm)			Ø 6-17/32" (166mm)	
E	Ø 5-33/64" (140mm)	Ø 6-3/16" (157mm)			Ø 8-17/64" (210mm)	
F	1/32" (0.8mm)					

Reference	QTY.	Remarks	Project:
			Location:
			Architect:
			Engineer:
			Contractor:
			Submitted by:
			Date: