

## LED SLIM LIGHTS

OLT2-410-5CCTWH | OLT2-615-5CCTWH

### WARNING

**WARNING — THE INSTALLATION MUST BE CARRIED OUT BY A QUALIFIED ELECTRICIAN.**

- LED Slim Lights are suitable for indoor use only. DO NOT use outdoors
- Please keep the LED Slim Lights away from any corrosive substance, and please use dry cloth when you clean them
- LED Slim Lights can only be installed by a qualified electrician
- Before installation or maintenance, please disconnect the power to prevent electric shock

### APPLICATION NOTICE

- For your safety, this fixture **MUST** be wired in accordance to electrical codes and ordinances
- **DO NOT** open the light fixture and the side plates of driver — no serviceable part inside
- **DO NOT** use any other driver except the ones advised by the supplier
- **DO NOT** connect multiple fixtures to one driver

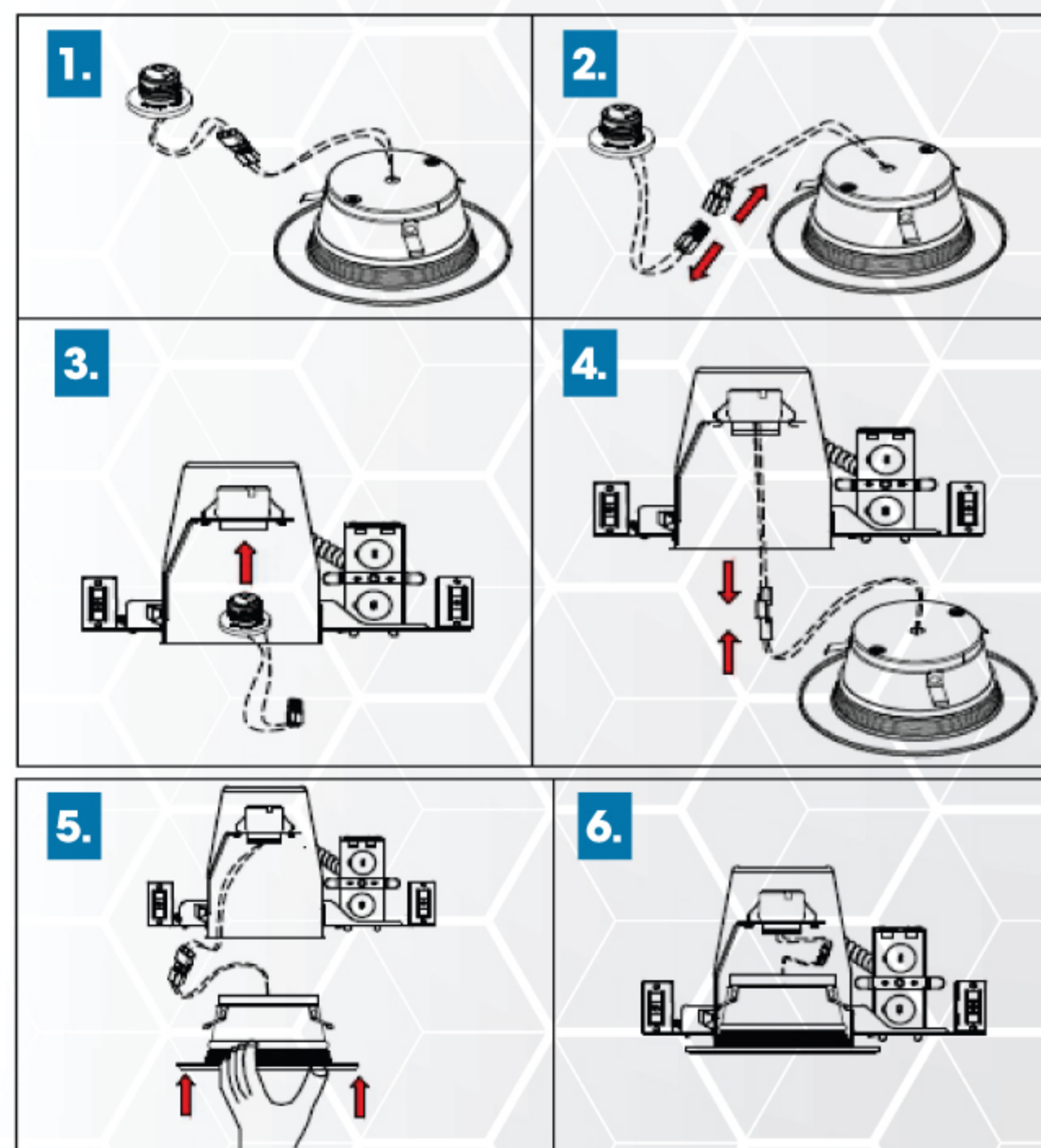


### CAUTION

**PLEASE READ INSTRUCTION BEFORE COMMENCING INSTALLATION AND RETAIN FOR FUTURE REFERENCES.**

Electrical products can cause death or injury, or damage to property. If in any doubt about the installation or use of this product, consult a competent electrician.

### INSTALLATION GUIDE



**STEP 1:** Remove LED downlight fixture from the packaging.

**STEP 2:** Make sure the **POWER IS TURNED OFF** at the source of the recessed housing(s) that you are installing the fixture in. Once power has been turned off, remove existing trim and lamp holder, revealing the existing socket and split up the terminals.

**STEP 3:** Put the lamp holder into the socket and twist socket clockwise until locked.

**STEP 4:** Pull LED downlight assembly, connect the terminals between the lamp holder and the trim. Care should be taken not to damage the wires during this process.

**STEP 5:** Slide LED downlight with torsion spring in fully-deployed position.

**STEP 6:** Push up into the recessed housing until trim ring is flush with ceiling.