

## LED LINEAR STRIP LIGHTS

### OL-ST4-3CCT+WMS

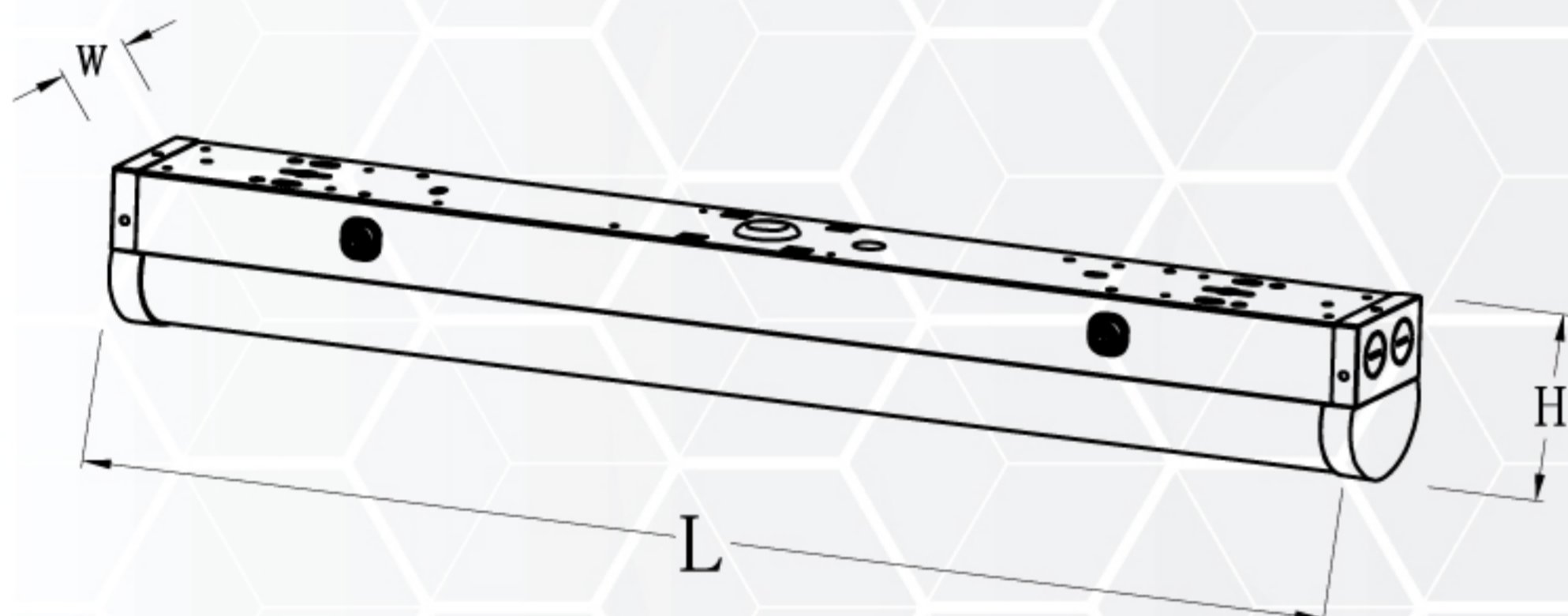
#### HIGHLIGHTS

##### 48" LED Strip Light Power & CCT adjusted, with Built-in Motion Sensor

- Built-in motion sensor with dip switches
- Factory setting: dims to 50%. Please see page 3 for more dimmer and sensor settings
- Daisy connection
- Suspending installation and surface-mounted installation
- Diffused light, Damp location rated, Polycarbonate lens
- 5 year warranty



#### DIMENSIONS



Model	LxWxH (mm/inch)
OL-ST4-3CCT+WMS	1185x74x83(mm) / 46.65"x2.91"x3.27

#### SPECIFICATIONS

Model	OL-ST4-3CCT+WMS
Wattage	30W   40W   50W
Voltage	AC120-347V
Lumens	3900lm   5200lm   6500lm
Beam Angle	120°
Lifetime	50000 hours
Dimmable	Yes(only 0-10v dimming available)
Warranty	5 years
Grade of Protection	IP20
Luminous Efficiency	130LM/W
Colour Temp.	3500K / 4000K / 5000K
Application	School / Hospital / Super market / Office / Warehouse
Operating Temp.	-20°C ~ +40°C
Case Quantities	8

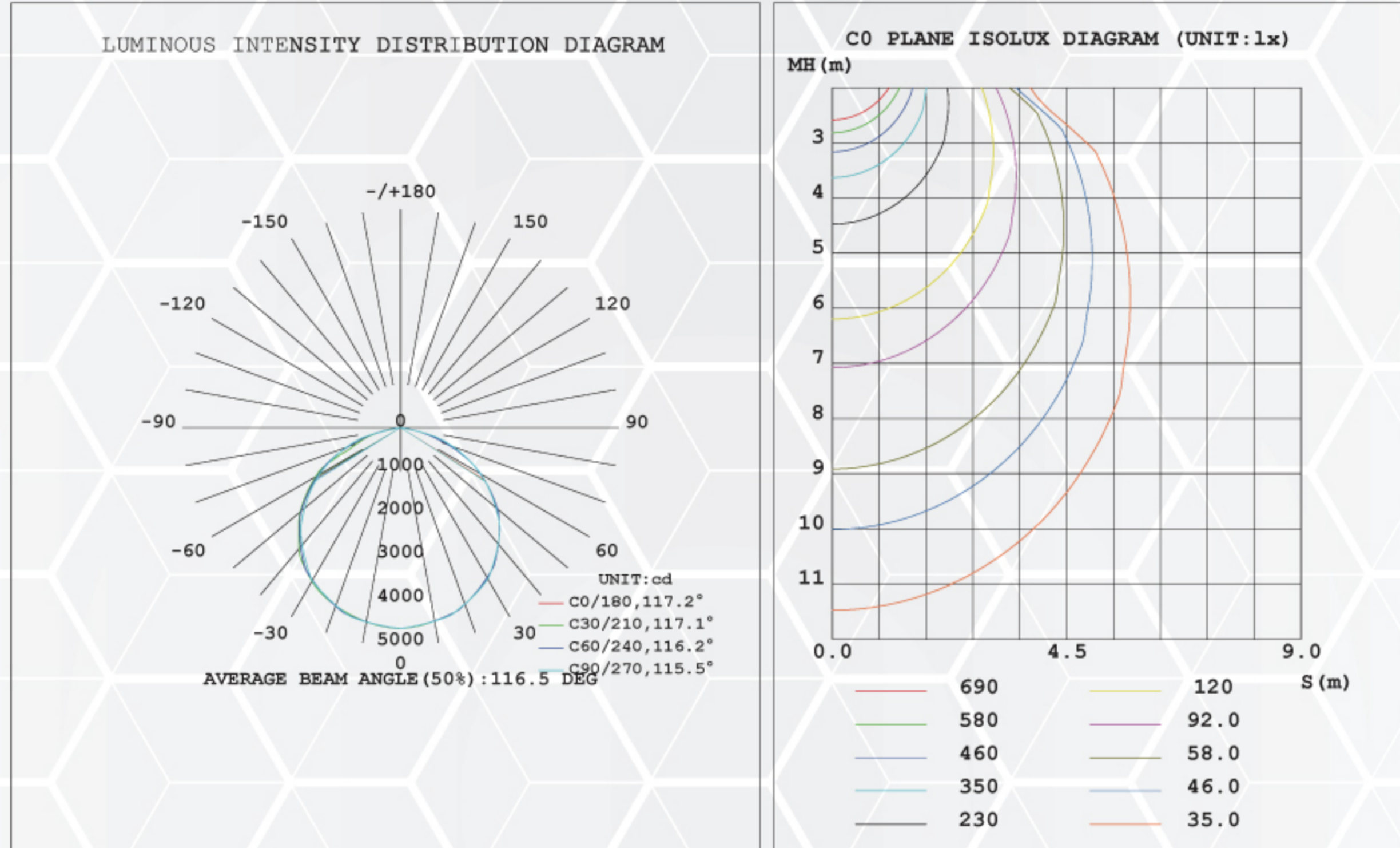
#### ACCESSORIES



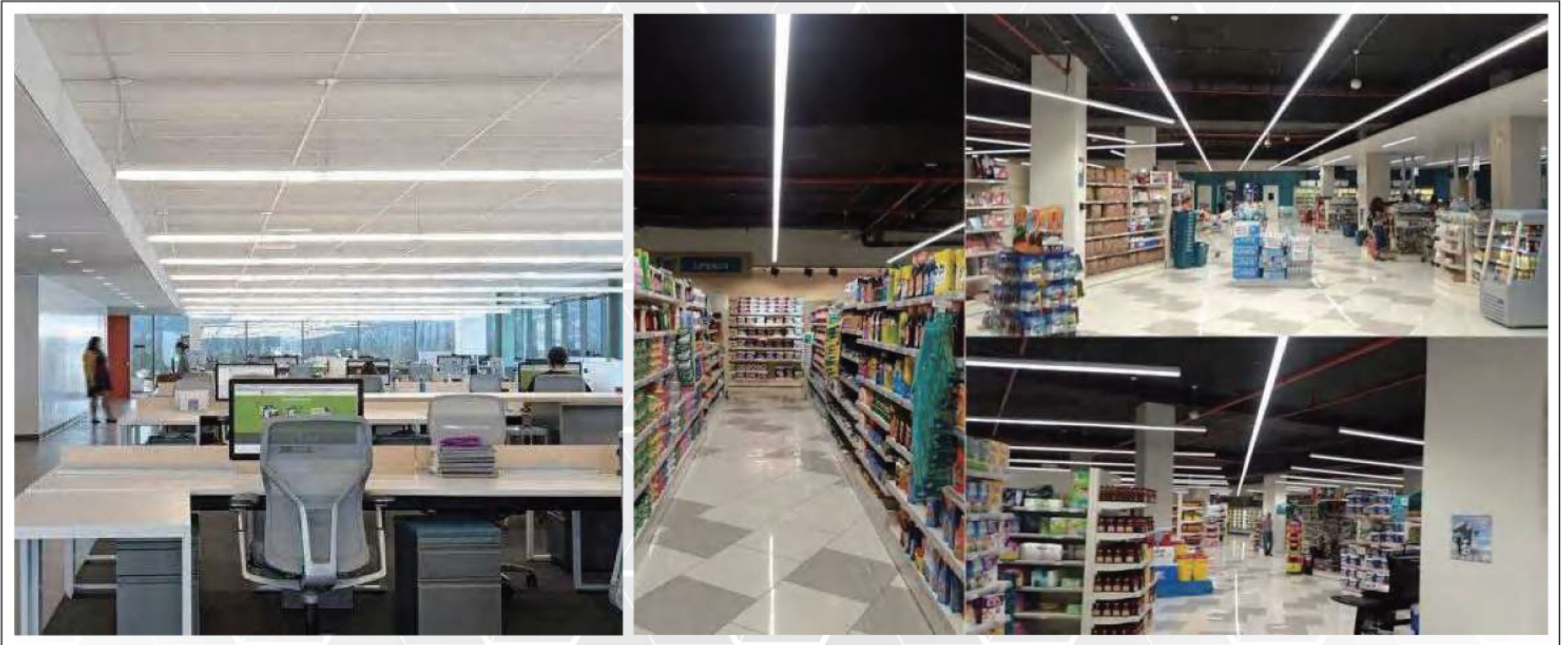
## LED LINEAR STRIP LIGHTS

OL-ST4-3CCT+WMS

## TESTING REPORT



## APPLICATIONS



## LED LINEAR STRIP LIGHTS

### OL-ST4-3CCT+WMS

## MOTION SENSOR SETTINGS

By selecting the combination of the DIP switches, sensor will be precisely set for different applications.

1	
●	100%
○	50%

#### Detection area

In this area, movement will be detected and able to trigger the sensor. 100% detection area is also known as the strong sensitivity.

2	3	
●	●	5s
●	○	30s
○	●	1min
○	○	10min

#### Hold-time

The period of light keeping 100% brightness after moving objects leave the detection area.

4	5	
●	●	Disable
●	○	50lux
○	●	10lux
○	○	2lux

#### Daylight threshold

Definition of the ambient brightness; only when the ambient brightness is lower than the preset specific lux amount, the sensor will work; when it's preset as "disable", the sensor works every time it detects motion regardless the ambient brightness.

6	7	
●	●	0s
●	○	30s
○	●	20min
○	○	+ ∞

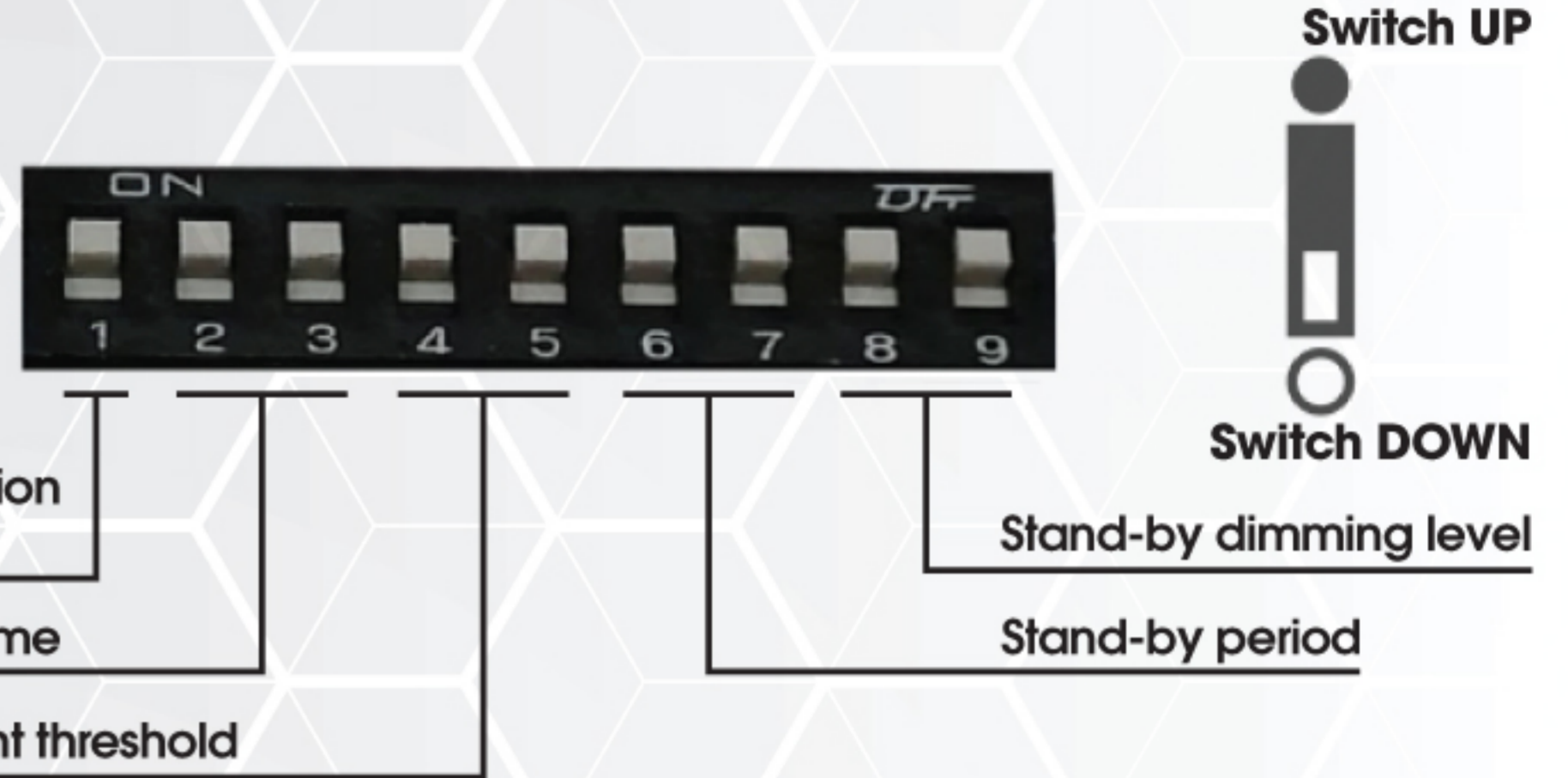
#### Stand-by period

The period of light keeping low output before it's completely switched off. When it's preset as "∞", the light always keep at low output if no movement in the detection area and doesn't turn off.

8	9	
●	●	10%
●	○	20%
○	●	30%
○	○	50%

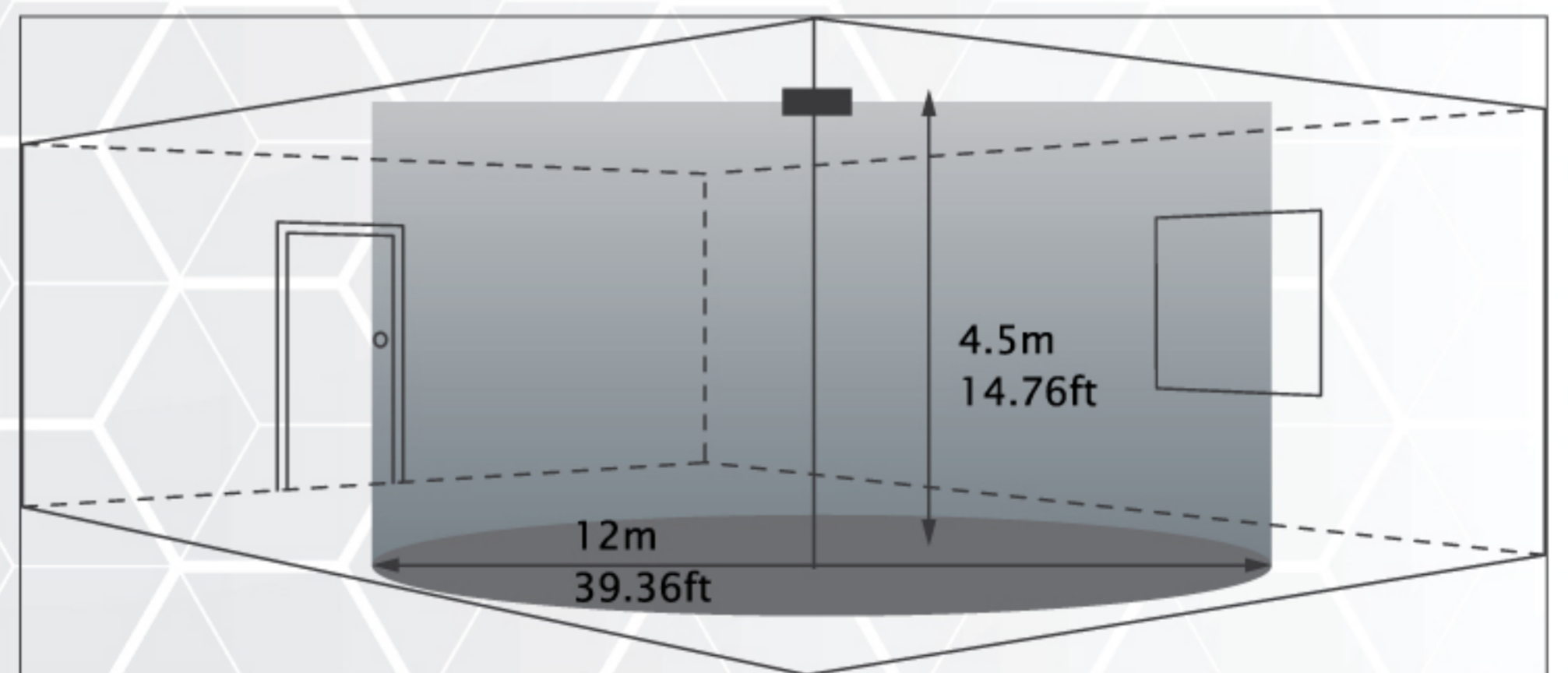
#### Stand-by dimming level

The definition of low output in the standby period.



Operating voltage	10-15VDC
Stand-by power	<0.5W
Stand-by power	≤1W
Detection area	50%/100%
Hold time	5s/30s/1min/10min
Daylight threshold	2Lux/10Lux/50Lux/Disable
Stand-by period	0s/30s/20min/+∞
Stand-by dimming level	10%/20%/30%/50%
Microwave frequency	5.8GHz±75MHz
Microwave power	<1mW
Mounting height	Max. 4.5m/14.76ft ( ceiling mounted )
Detection range	Max.∅12m/39.36ft ( ceiling mounted )
Operating temperature	-20°C~+60°C
Detection angle	30°-150°
Motion detection	0.5~3m/s
IP rating	IP20
Warranty	5 years

#### Detection Range



Reference	QTY.	Remarks	Project:
			Location:
			Architect:
			Engineer:
			Contractor:
			Submitted by:
			Date:

ORTECH reserves the right to modify at any time, without notice, any or all of our product's features, designs, components and specifications to meet market changes.