

# Lint Trap (Dual Size)

## MODEL LINT TRAP-DS 6"



### WARNING

**WARNING — THE INSTALLATION MUST BE CARRIED OUT BY A QUALIFIED TECHNICIAN.**

1. A utility knife and a screw driver required for installation
2. Read the instruction manual before proceeding to installing the device

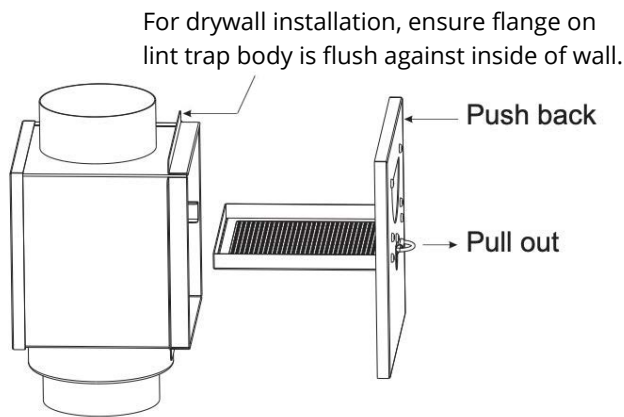
### CAUTION

**PLEASE READ INSTRUCTION BEFORE COMMENCING INSTALLATION AND RETAIN FOR FUTURE REFERENCES.**

**Electrical products can cause death or injury, or damage to property.**

**If in any doubt about the installation or use of this product, consult a competent technician.**

### INSTALLATION GUIDE

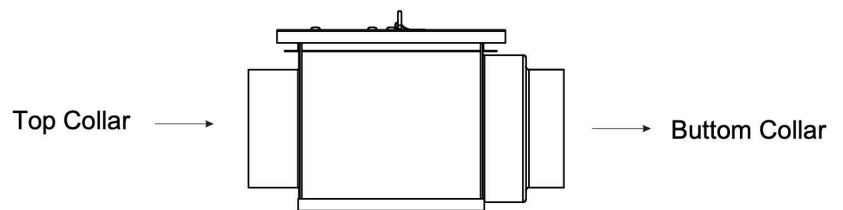


1. Cut the duct which is tached to the dryer in proper position.
2. Slide the free end of the duct from outside over the top collar of the lint trap unit. Secure it with adjustable metal clamp.
3. Slide the other free end of the duct over the bottom collar of the lint trap unit. Secure it with other adjustable metal clamp, then the installation is complete.

**Note: For 5/8" drywall installation, ensure foam on inside of lint trap door is removed**

#### Clear the Lint Trap

1. Pull out the screen
2. Clear the lint on the mesh
3. Push the screen back to the housing



ORTECH reserves the right to modify at any time, without notice, any or all of our product's features, designs, components and specifications to meet market changes.